

## Product datasheet for **TA334718**

### **RUNX1T1 Rabbit Polyclonal Antibody**

#### **Product data:**

|                         |  |
|-------------------------|--|
| Product Type:           | Primary Antibodies   |
| Applications:           | WB   |
| Recommended Dilution:   | WB   |
| Reactivity:             | Human  |
| Host:                   | Rabbit   |
| Isotype:                | IgG  |
| Clonality:              | Polyclonal   |
| Immunogen:              | The immunogen for anti-RUNX1T1 antibody: synthetic peptide directed towards the middle region of human RUNX1T1. Synthetic peptide located within the following region:<br>LHSEHPSKRPCTISPGQRYSPNNGLSYQPNGLPHTPPPPQHRYLDDMAI  |
| Formulation:            | Liquid. Purified antibody supplied in 1x PBS buffer with 0.09% (w/v) sodium azide and 2% sucrose.<br><i>Note that this product is shipped as lyophilized powder to China customers.</i>  |
| Purification:           | Protein A purified   |
| Conjugation:            | Unconjugated   |
| Storage:                | Store at -20°C as received.  |
| Stability:              | Stable for 12 months from date of receipt.   |
| Predicted Protein Size: | 62 kDa   |
| Gene Name:              | RUNX1 translocation partner 1  |
| Database Link:          | <a href="#">NP_783554</a><br><a href="#">Entrez Gene 862 Human</a><br><a href="#">Q06455</a>   |
| Background:             | RUNX1T1 is a putative zinc finger transcription factor and oncoprotein. In acute myeloid leukemia, especially in the M2 subtype, the t(8;21)(q22;q22) translocation is one of the most frequent karyotypic abnormalities. The translocation produces a chimeric gene made up of the 5'-region of the RUNX1 gene fused to the 3'-region of this gene. The chimeric protein is thought to associate with the nuclear corepressor/histone deacetylase complex to block hematopoietic differentiation. |



[View online »](#)

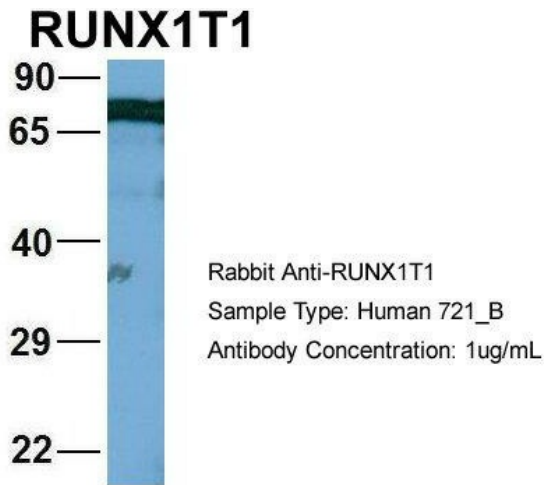
**Synonyms:** AML1T1; CBFA2T1; CDR; ETO; MTG8; ZMYND2

**Note:** Immunogen Sequence Homology: Dog: 100%; Pig: 100%; Rat: 100%; Horse: 100%; Human: 100%; Mouse: 100%; Bovine: 100%; Rabbit: 100%; Zebrafish: 100%; Guinea pig: 100%

**Protein Families:** Transcription Factors

**Protein Pathways:** Acute myeloid leukemia, Pathways in cancer

**Product images:**



1Human 721\_B; Host: Rabbit; Target Name: WT1;  
Sample Tissue: 721\_B; Antibody Dilution: 1.0  
ug/ml; RUNX1T1 is supported by BioGPS gene  
expression data to be expressed in 721\_B



WB Suggested Anti-RUNX1T1 Antibody Titration:  
1.25 ug/ml; Positive Control: HepG2 cell  
lysateThere is BioGPS gene expression data  
showing that RUNX1T1 is expressed in HepG2