

Product datasheet for **TA334717**

CBFA2T3 Rabbit Polyclonal Antibody

Product data:

Product Type:	Primary Antibodies
Applications:	WB
Recommended Dilution:	WB
Reactivity:	Human
Host:	Rabbit
Isotype:	IgG
Clonality:	Polyclonal
Immunogen:	The immunogen for anti-CBFA2T3 antibody: synthetic peptide directed towards the N terminal of human CBFA2T3. Synthetic peptide located within the following region: QPRSTPPSMPPPPAASQGATRPPSFTPHTLMNGSSHSPTAINGAPCTPN
Formulation:	Liquid. Purified antibody supplied in 1x PBS buffer with 0.09% (w/v) sodium azide and 2% sucrose. <i>Note that this product is shipped as lyophilized powder to China customers.</i>
Purification:	Affinity Purified
Conjugation:	Unconjugated
Storage:	Store at -20°C as received.
Stability:	Stable for 12 months from date of receipt.
Predicted Protein Size:	62 kDa
Gene Name:	CBFA2/RUNX1 translocation partner 3
Database Link:	NP_787127 Entrez Gene 863 Human O75081
Background:	The t(16;21)(q24;q22) translocation is a rare but recurrent chromosomal abnormality associated with therapy-related myeloid malignancies. The translocation produces a chimeric gene made up of the 5'-region of the AML1 gene fused to the 3'-region of CBFA2T3. In addition, CBFA2T3 is a putative breast tumor suppressor.
Synonyms:	ETO2; MTG16; MTGR2; ZMYND4



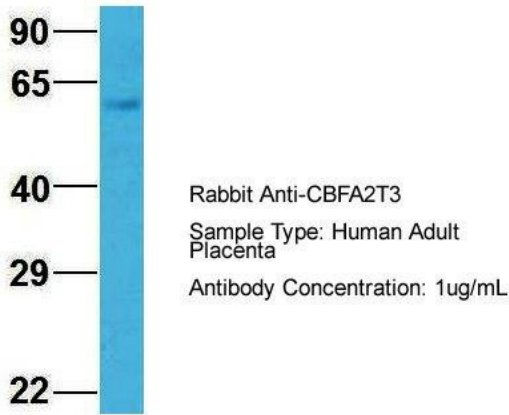
[View online »](#)

Note: Immunogen Sequence Homology: Pig: 100%; Rat: 100%; Human: 100%; Mouse: 100%; Guinea pig: 100%; Dog: 92%; Bovine: 92%; Horse: 85%

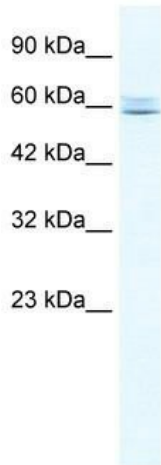
Protein Families: Transcription Factors

Product images:

CBFA2T3

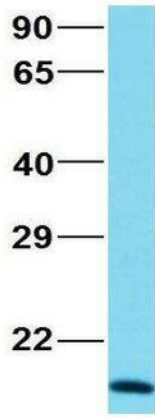


1Hum. Adult Placenta; Host: Rabbit; Target Name: CHAD; Sample Tissue: Human Adult Placenta; Antibody Dilution: 1.0 ug/ml



WB Suggested Anti-CBFA2T3 Antibody Titration: 0.2-1 ug/ml; Positive Control: Jurkat cell lysate CBFA2T3 is supported by BioGPS gene expression data to be expressed in Jurkat

CBFA2T3



Rabbit Anti-CBFA2T3
Sample Type: Human MCF7
Antibody Concentration: 1ug/mL

3Human MCF7; Host: Rabbit; Target Name:
NOP56; Sample Tissue: MCF7; Antibody Dilution:
1.0 ug/ml; CBFA2T3 is supported by BioGPS gene
expression data to be expressed in MCF7