

Product datasheet for **TA334714**

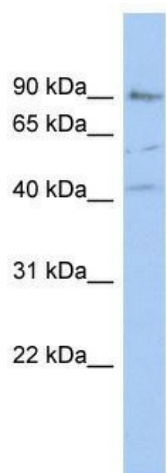
PARP12 Rabbit Polyclonal Antibody

Product data:

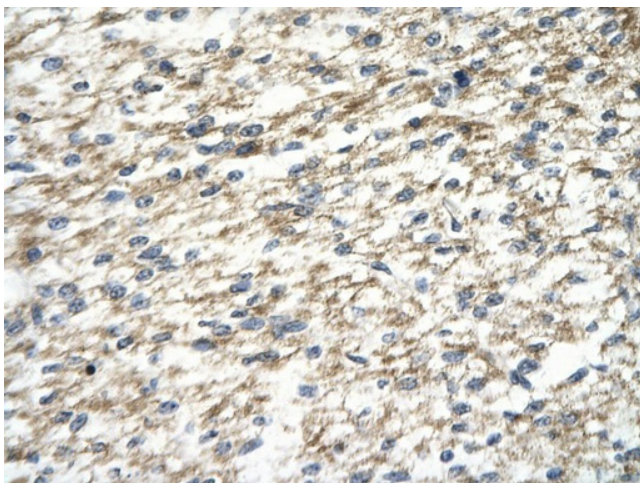
Product Type:	Primary Antibodies
Applications:	IHC, WB
Recommended Dilution:	WB, IHC
Reactivity:	Human
Host:	Rabbit
Isotype:	IgG
Clonality:	Polyclonal
Immunogen:	The immunogen for anti-PARP12 antibody: synthetic peptide directed towards the middle region of human PARP12. Synthetic peptide located within the following region: FYDSCVNSVSDPSIFVIFEKHQVYPEYVIQYTTSSKPSVTPSILLALGSL
Formulation:	Liquid. Purified antibody supplied in 1x PBS buffer with 0.09% (w/v) sodium azide and 2% sucrose. <i>Note that this product is shipped as lyophilized powder to China customers.</i>
Purification:	Affinity Purified
Conjugation:	Unconjugated
Storage:	Store at -20°C as received.
Stability:	Stable for 12 months from date of receipt.
Predicted Protein Size:	79 kDa
Gene Name:	poly(ADP-ribose) polymerase family member 12
Database Link:	NP_073587 Entrez Gene 64761 Human Q9H0J9
Background:	The specific function of this protein remains unknown.
Synonyms:	ARTD12; MST109; MSTP109; ZC3H1; ZC3HDC1
Note:	Immunogen Sequence Homology: Pig: 100%; Human: 100%; Horse: 93%; Rat: 86%; Mouse: 86%; Bovine: 85%; Rabbit: 83%; Dog: 79%



[View online »](#)

Product images:

WB Suggested Anti-PARP12 Antibody Titration: 0.2-1 ug/ml; ELISA Titer: 1:62500; Positive Control: ACHN cell lysate. PARP12 is supported by BioGPS gene expression data to be expressed in ACHN



Rabbit Anti-PARP12 Antibody; Paraffin Embedded Tissue: Human cardiac cell; Cellular Data: Epithelial cells of renal tubule; Antibody Concentration: 4.0-8.0 ug/ml; Magnification: 400X