

## Product datasheet for **TA334713**

### KCNA5 Rabbit Polyclonal Antibody

#### Product data:

Product Type:	Primary Antibodies
Applications:	WB
Recommended Dilution:	WB
Reactivity:	Human
Host:	Rabbit
Isotype:	IgG
Clonality:	Polyclonal
Immunogen:	The immunogen for anti-KCNA5 antibody: synthetic peptide directed towards the N terminal of human KCNA5. Synthetic peptide located within the following region: DPGVRPLPPLPEELPRRRPPPEDEEEEGDPGLGTVEDQALGTASLHHQR
Formulation:	Liquid. Purified antibody supplied in 1x PBS buffer with 0.09% (w/v) sodium azide and 2% sucrose. <i>Note that this product is shipped as lyophilized powder to China customers.</i>
Purification:	Affinity Purified
Conjugation:	Unconjugated
Storage:	Store at -20°C as received.
Stability:	Stable for 12 months from date of receipt.
Predicted Protein Size:	67 kDa
Gene Name:	potassium voltage-gated channel subfamily A member 5
Database Link:	<a href="#">NP_002225</a> <a href="#">Entrez Gene 3741 Human</a> <a href="#">P22460</a>



[View online »](#)

**Background:**

Potassium channels represent the most complex class of voltage-gated ion channels from both functional and structural standpoints. Their diverse functions include regulating neurotransmitter release, heart rate, insulin secretion, neuronal excitability, epithelial electrolyte transport, smooth muscle contraction, and cell volume. Four sequence-related potassium channel genes - shaker, shaw, shab, and shal - have been identified in *Drosophila*, and each has been shown to have human homolog(s). KCNA5 encodes a member of the potassium channel, voltage-gated, shaker-related subfamily. This member contains six membrane-spanning domains with a shaker-type repeat in the fourth segment. It belongs to the delayed rectifier class, the function of which could restore the resting membrane potential of beta cells after depolarization and thereby contribute to the regulation of insulin secretion.

**Synonyms:**

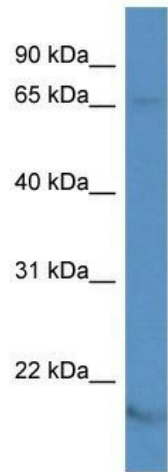
ATFB7; HCK1; HK2; HPCN1; KV1.5; PCN1

**Note:**

Immunogen Sequence Homology: Human: 100%; Rat: 93%; Mouse: 93%

**Protein Families:**

Druggable Genome, Ion Channels: Potassium, Transmembrane

**Product images:**

WB Suggested Anti-KCNA5 Antibody; Titration: 1.0 ug/ml; Positive Control: HepG2 Whole Cell