

Product datasheet for **TA334711**

KIF9 Rabbit Polyclonal Antibody

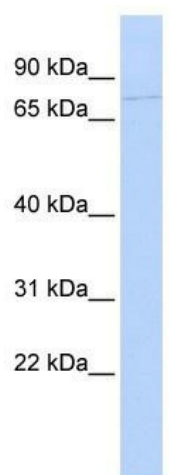
Product data:

Product Type:	Primary Antibodies
Applications:	WB
Recommended Dilution:	WB
Reactivity:	Human
Host:	Rabbit
Isotype:	IgG
Clonality:	Polyclonal
Immunogen:	The immunogen for anti-KIF9 antibody: synthetic peptide directed towards the n terminal of human KIF9. Synthetic peptide located within the following region: MGTRKKVHAFVRVKPTDDFAHEMIRYGDDKRSIDIHLKDIRRGVNNQQ
Formulation:	Liquid. Purified antibody supplied in 1x PBS buffer with 0.09% (w/v) sodium azide and 2% sucrose.
Purification:	Affinity Purified
Conjugation:	Unconjugated
Storage:	Store at -20°C as received.
Stability:	Stable for 12 months from date of receipt.
Predicted Protein Size:	75 kDa
Gene Name:	kinesin family member 9
Database Link:	NP_878905 Entrez Gene 64147 Human Q9HAQ2
Background:	The function of the KIF9 protein remains unknown.
Synonyms:	MGC104186
Note:	Immunogen Sequence Homology: Human: 100%; Rat: 93%; Horse: 93%; Mouse: 93%; Bovine: 93%; Pig: 86%; Guinea pig: 86%; Rabbit: 79%
Protein Families:	Druggable Genome



[View online »](#)

Product images:



WB Suggested Anti-KIF9 Antibody Titration: 0.2-1 ug/ml; ELISA Titer: 1:1562500; Positive Control: MCF7 cell lysate