

## Product datasheet for **TA334710**

### KIF9 Rabbit Polyclonal Antibody

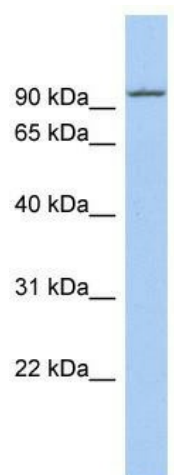
#### Product data:

Product Type:	Primary Antibodies
Applications:	WB
Recommended Dilution:	WB
Reactivity:	Human
Host:	Rabbit
Isotype:	IgG
Clonality:	Polyclonal
Immunogen:	The immunogen for anti-KIF9 antibody: synthetic peptide directed towards the n terminal of human KIF9. Synthetic peptide located within the following region: MGTRKKVHAFVRVKPTDDFAHEMIRYGDDKRSIDIHLKDIRRGVNNQQ
Formulation:	Liquid. Purified antibody supplied in 1x PBS buffer with 0.09% (w/v) sodium azide and 2% sucrose.
Purification:	Affinity Purified
Conjugation:	Unconjugated
Storage:	Store at -20°C as received.
Stability:	Stable for 12 months from date of receipt.
Predicted Protein Size:	90 kDa
Gene Name:	kinesin family member 9
Database Link:	<a href="#">NP_878905</a> <a href="#">Entrez Gene 64147 Human</a> <a href="#">Q9HAQ2</a>
Background:	The function of the KIF9 protein remains unknown.
Synonyms:	MGC104186
Note:	Immunogen Sequence Homology: Dog: 100%; Rat: 100%; Human: 100%; Rabbit: 100%; Pig: 93%; Horse: 93%; Bovine: 93%; Guinea pig: 93%; Mouse: 86%
Protein Families:	Druggable Genome



[View online »](#)

## Product images:



WB Suggested Anti-KIF9 Antibody Titration: 0.2-1 ug/ml; ELISA Titer: 1:62500; Positive Control: THP-1 cell lysate