

## Product datasheet for **TA334709**

### **MKLP1 (KIF23) Rabbit Polyclonal Antibody**

#### **Product data:**

<b>Product Type:</b>	Primary Antibodies
<b>Applications:</b>	WB
<b>Recommended Dilution:</b>	WB
<b>Reactivity:</b>	Human, Mouse
<b>Host:</b>	Rabbit
<b>Isotype:</b>	IgG
<b>Clonality:</b>	Polyclonal
<b>Immunogen:</b>	The immunogen for anti-KIF23 antibody: synthetic peptide directed towards the N terminal of human KIF23. Synthetic peptide located within the following region: MKSARAKTPRKPTVKKGSQTNLKDPVGVYCRVRPLGFDPQECCIEVINNT
<b>Formulation:</b>	Liquid. Purified antibody supplied in 1x PBS buffer with 0.09% (w/v) sodium azide and 2% sucrose. <i>Note that this product is shipped as lyophilized powder to China customers.</i>
<b>Purification:</b>	Protein A purified
<b>Conjugation:</b>	Unconjugated
<b>Storage:</b>	Store at -20°C as received.
<b>Stability:</b>	Stable for 12 months from date of receipt.
<b>Predicted Protein Size:</b>	98 kDa
<b>Gene Name:</b>	kinesin family member 23
<b>Database Link:</b>	<a href="#">NP_004847</a> <a href="#">Entrez Gene 71819 Mouse</a> <a href="#">Entrez Gene 9493 Human</a> <a href="#">Q02241</a>
<b>Background:</b>	KIF23 is a member of kinesin-like protein family. This family includes microtubule-dependent molecular motors that transport organelles within cells and move chromosomes during cell division. This protein has been shown to cross-bridge antiparallel microtubules and drive microtubule movement in vitro. Alternate splicing of this gene results in two transcript variants encoding two different isoforms.
<b>Synonyms:</b>	CHO1; KNSL5; MKLP-1; MKLP1

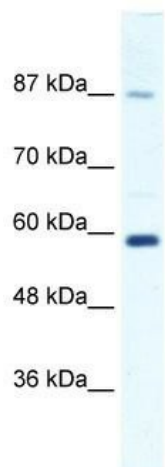


[View online >](#)

**Note:** Immunogen Sequence Homology: Human: 100%; Rabbit: 92%; Rat: 85%; Horse: 85%; Mouse: 85%; Bovine: 85%

**Protein Families:** Druggable Genome

**Product images:**



WB Suggested Anti-KIF23 Antibody Titration: 1.25 ug/ml; Positive Control: Jurkat cell lysate