

Product datasheet for TA334707

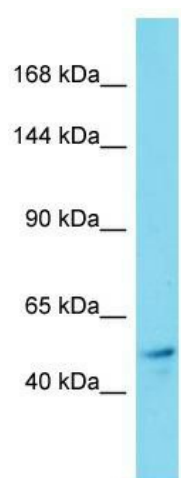
KIF19 Rabbit Polyclonal Antibody

Product data:

Product Type:	Primary Antibodies
Applications:	WB
Recommended Dilution:	WB
Reactivity:	Human
Host:	Rabbit
Isotype:	IgG
Clonality:	Polyclonal
Immunogen:	The immunogen for anti-KIF19 antibody is: synthetic peptide directed towards the N-terminal region of Human KIF19. Synthetic peptide located within the following region: QQLMVALRVRPISVAEEEGATLIAHKVDEQMVVLMDPMPDDILRAHR
Formulation:	Liquid. Purified antibody supplied in 1x PBS buffer with 0.09% (w/v) sodium azide and 2% sucrose.
Purification:	Affinity Purified
Conjugation:	Unconjugated
Storage:	Store at -20°C as received.
Stability:	Stable for 12 months from date of receipt.
Predicted Protein Size:	55 kDa
Gene Name:	kinesin family member 19
Database Link:	NP_694941 Entrez Gene 124602 Human Q2TAC6
Background:	KIF19 is a plus end-directed microtubule-dependent motor protein that regulates the length of motile cilia by mediating depolymerization of microtubules at ciliary tips.
Synonyms:	KIF19A
Note:	Immunogen Sequence Homology: Dog: 100%; Pig: 100%; Horse: 100%; Human: 100%; Mouse: 100%; Bovine: 100%; Rabbit: 100%; Guinea pig: 100%; Rat: 93%; Zebrafish: 92%
Protein Families:	Druggable Genome


[View online »](#)

Product images:



Host: Rabbit; Target Name: KIF19; Sample Tissue: Thyroid Tumor lysates; Antibody Dilution: 1.0 ug/ml