

Product datasheet for **TA334706**

KIFC2 Rabbit Polyclonal Antibody

Product data:

| | |
|-------------------------|---|
| Product Type: | Primary Antibodies |
| Applications: | WB |
| Recommended Dilution: | WB |
| Reactivity: | Human |
| Host: | Rabbit |
| Isotype: | IgG |
| Clonality: | Polyclonal |
| Immunogen: | The immunogen for anti-KIFC2 antibody: synthetic peptide directed towards the N terminal of human KIFC2. Synthetic peptide located within the following region: TQGQPLQLEEDQRAWQRLEQLILGQLEELKQQLQQEELGRLRLGVGA |
| Formulation: | Liquid. Purified antibody supplied in 1x PBS buffer with 0.09% (w/v) sodium azide and 2% sucrose. |
| Purification: | Affinity Purified |
| Conjugation: | Unconjugated |
| Storage: | Store at -20°C as received. |
| Stability: | Stable for 12 months from date of receipt. |
| Predicted Protein Size: | 90 kDa |
| Gene Name: | kinesin family member C2 |
| Database Link: | NP_665697 Entrez Gene 90990 Human Q96AC6 |
| Background: | Members of the kinesin superfamily of microtubule-associated proteins are involved in a variety of intracellular processes including cell division and organelle transport. KIFC2 encodes a 792 amino acid protein, which contains the conserved motor domain at the C-terminal end of the protein and is most similar to members of the KAR3 family involved in cell division. |
| Synonyms: | kinesin family member C2 |

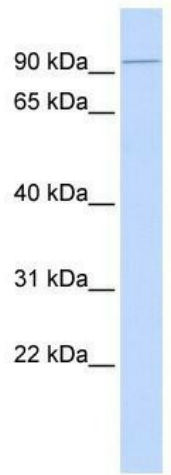


[View online »](#)

Note: Immunogen Sequence Homology: Pig: 100%; Rat: 100%; Human: 100%; Guinea pig: 100%; Horse: 93%; Mouse: 93%; Bovine: 93%; Dog: 90%; Yeast: 75%

Protein Families: Druggable Genome

Product images:



WB Suggested Anti-KIFC2 Antibody Titration: 0.2-1 ug/ml; ELISA Titer: 1:12500; Positive Control: Human Muscle