

Product datasheet for **TA334705**

KIFC2 Rabbit Polyclonal Antibody

Product data:

Product Type:	Primary Antibodies
Applications:	IHC, WB
Recommended Dilution:	WB, IHC
Reactivity:	Human
Host:	Rabbit
Isotype:	IgG
Clonality:	Polyclonal
Immunogen:	The immunogen for anti-KIFC2 antibody: synthetic peptide directed towards the N terminal of human KIFC2. Synthetic peptide located within the following region: VRPPSPDGSTSQEESPSHFTAVPGEPLGDETQGQQPLQLEEDQRAWQRLE
Formulation:	Liquid. Purified antibody supplied in 1x PBS buffer with 0.09% (w/v) sodium azide and 2% sucrose. <i>Note that this product is shipped as lyophilized powder to China customers.</i>
Purification:	Protein A purified
Conjugation:	Unconjugated
Storage:	Store at -20°C as received.
Stability:	Stable for 12 months from date of receipt.
Predicted Protein Size:	90 kDa
Gene Name:	kinesin family member C2
Database Link:	NP_665697 Entrez Gene 90990 Human Q96AC6
Background:	Members of the kinesin superfamily of microtubule-associated proteins are involved in a variety of intracellular processes including cell division and organelle transport. KIFC2 encodes a 792 amino acid protein, which contains the conserved motor domain at the C-terminal end of the protein and is most similar to members of the KAR3 family involved in cell division.
Synonyms:	kinesin family member C2

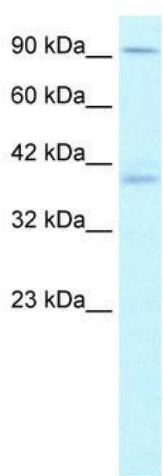


[View online »](#)

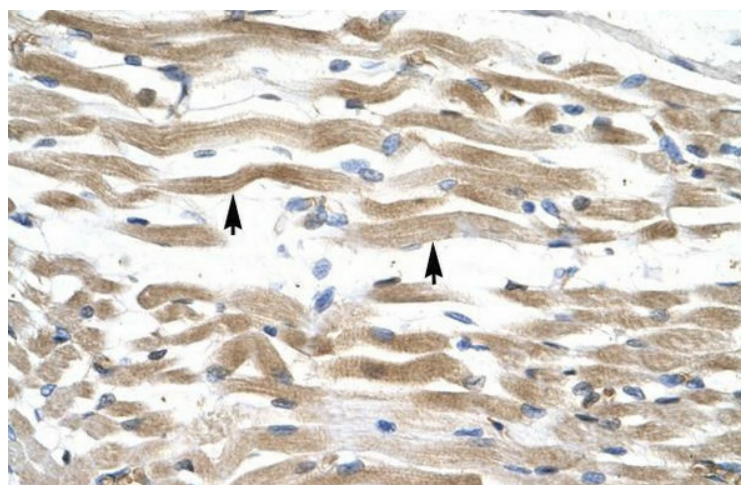
Note: Immunogen Sequence Homology: Human: 100%; Horse: 86%; Bovine: 86%; Mouse: 79%

Protein Families: Druggable Genome

Product images:



WB Suggested Anti-KIFC2 Antibody Titration: 1.25 ug/ml; Positive Control: Jurkat cell lysate



Human Muscle