

## Product datasheet for **TA334703**

### KIF12 Rabbit Polyclonal Antibody

#### Product data:

Product Type:	Primary Antibodies
Applications:	WB
Recommended Dilution:	WB
Reactivity:	Human
Host:	Rabbit
Isotype:	IgG
Clonality:	Polyclonal
Immunogen:	The immunogen for anti-KIF12 antibody: synthetic peptide directed towards the N terminal of human KIF12. Synthetic peptide located within the following region: SLGSPRPLPVRWNKTRGFYVEQLRVVEFGSLEALMELLQTGLSRRRNSAH
Formulation:	Liquid. Purified antibody supplied in 1x PBS buffer with 0.09% (w/v) sodium azide and 2% sucrose. <i>Note that this product is shipped as lyophilized powder to China customers.</i>
Purification:	Affinity Purified
Conjugation:	Unconjugated
Storage:	Store at -20°C as received.
Stability:	Stable for 12 months from date of receipt.
Predicted Protein Size:	56 kDa
Gene Name:	kinesin family member 12
Database Link:	<a href="#">NP_612433</a> <a href="#">Entrez Gene 113220 Human</a> <a href="#">Q96FN5</a>
Background:	KIF12 is a member of the kinesin superfamily of microtubule-associated molecular motors that play important roles in intracellular transport and cell division. KIF12 is a member of the kinesin superfamily of microtubule-associated molecular motors (see MIM 148760) that play important roles in intracellular transport and cell division (Nakagawa et al., 1997 [PubMed 9275178]). [supplied by OMIM]
Synonyms:	RP11-56P10.3

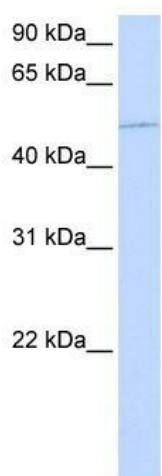


[View online »](#)

**Note:** Immunogen Sequence Homology: Dog: 100%; Pig: 100%; Rat: 100%; Human: 100%; Bovine: 100%; Rabbit: 100%; Guinea pig: 100%; Mouse: 92%; Horse: 85%

**Protein Families:** Druggable Genome

**Product images:**



WB Suggested Anti-KIF12 Antibody Titration: 0.2-1 ug/ml; ELISA Titer: 1:62500; Positive Control: 721\_B cell lysate