

Product datasheet for **TA334702**

KIF2B Rabbit Polyclonal Antibody

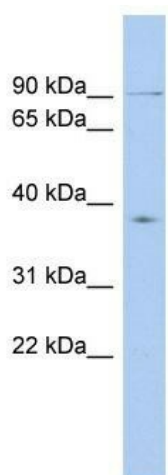
Product data:

Product Type:	Primary Antibodies
Applications:	WB
Recommended Dilution:	WB
Reactivity:	Human
Host:	Rabbit
Isotype:	IgG
Clonality:	Polyclonal
Immunogen:	The immunogen for anti-KIF2B antibody: synthetic peptide directed towards the middle region of human KIF2B. Synthetic peptide located within the following region: CVCVCRKRLNQRRETTLKDLDIITVPSDNVMMVHESKQKVDLTRYLQNQTF
Formulation:	Liquid. Purified antibody supplied in 1x PBS buffer with 0.09% (w/v) sodium azide and 2% sucrose.
Purification:	Affinity Purified
Conjugation:	Unconjugated
Storage:	Store at -20°C as received.
Stability:	Stable for 12 months from date of receipt.
Predicted Protein Size:	76 kDa
Gene Name:	kinesin family member 2B
Database Link:	NP_115948 Entrez Gene 84643 Human Q8N4N8
Background:	KIF2B is the plus end-directed microtubule-dependent motor required for spindle assembly and chromosome movement. KIF2B has microtubule depolymerization activity.
Synonyms:	FLJ53902
Note:	Immunogen Sequence Homology: Human: 100%; Dog: 87%; Pig: 87%; Mouse: 87%; Guinea pig: 87%; Rat: 80%; Rabbit: 80%; Horse: 79%
Protein Families:	Druggable Genome



[View online »](#)

Product images:



WB Suggested Anti-KIF2B Antibody Titration: 0.2-1 ug/ml; ELISA Titer: 1:312500; Positive Control: ACHN cell lysate