

Product datasheet for TA334701

KIF15 Rabbit Polyclonal Antibody

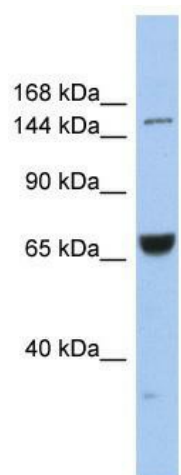
Product data:

Product Type:	Primary Antibodies
Applications:	WB
Recommended Dilution:	WB
Reactivity:	Human
Host:	Rabbit
Isotype:	IgG
Clonality:	Polyclonal
Immunogen:	The immunogen for anti-KIF15 antibody: synthetic peptide directed towards the middle region of human KIF15. Synthetic peptide located within the following region: SKKHSGLLQSAQEELTKKEALIQELQHKLNQKKEEVEQKKNEYNFKMRQL
Formulation:	Liquid. Purified antibody supplied in 1x PBS buffer with 0.09% (w/v) sodium azide and 2% sucrose.
Purification:	Affinity Purified
Conjugation:	Unconjugated
Storage:	Store at -20°C as received.
Stability:	Stable for 12 months from date of receipt.
Predicted Protein Size:	160 kDa
Gene Name:	kinesin family member 15
Database Link:	NP_064627 Entrez Gene 56992 Human Q9NS87
Background:	KIF15 is the plus-end directed kinesin-like motor enzyme involved in mitotic spindle assembly.
Synonyms:	HKLP2; KNSL7; NY-BR-62
Note:	Immunogen Sequence Homology: Human: 100%; Pig: 93%; Rat: 93%; Horse: 93%; Mouse: 93%; Bovine: 93%; Rabbit: 93%; Dog: 86%; Yeast: 83%
Protein Families:	Druggable Genome



[View online »](#)

Product images:



WB Suggested Anti-KIF15 Antibody Titration: 0.2-1 ug/ml; ELISA Titer: 1:62500; Positive Control: COLO205 cell lysate