

Product datasheet for **TA334699**

KIF27 Rabbit Polyclonal Antibody

Product data:

Product Type:	Primary Antibodies
Applications:	WB
Recommended Dilution:	WB
Reactivity:	Human
Host:	Rabbit
Isotype:	IgG
Clonality:	Polyclonal
Immunogen:	The immunogen for anti-KIF27 antibody is: synthetic peptide directed towards the C-terminal region of Human KIF27. Synthetic peptide located within the following region: ELEADLKKREAIVSKKEALLQEKSHLENKKLRSSQALNTDSLKISTRNLN
Formulation:	Liquid. Purified antibody supplied in 1x PBS buffer with 0.09% (w/v) sodium azide and 2% sucrose.
Purification:	Affinity Purified
Conjugation:	Unconjugated
Storage:	Store at -20°C as received.
Stability:	Stable for 12 months from date of receipt.
Predicted Protein Size:	160 kDa
Gene Name:	kinesin family member 27
Database Link:	NP_060046 Entrez Gene 55582 Human Q86VH2
Background:	This gene is a member of the KIF27 (kinesin 4) sub-family of the mammalian kinesin family. The gene is an ortholog of the Drosophila Cos2 gene, which plays an important role in the Hedgehog signaling pathway. The encoded protein contains an N-terminal motor domain which includes nucleotide-binding and microtubule-interacting regions, a stalk domain containing a predicted coiled coil motif and a C-terminal tail domain. Alternatively spliced transcript variants have been observed for this gene. Pseudogenes associated with this gene are located on chromosome 9



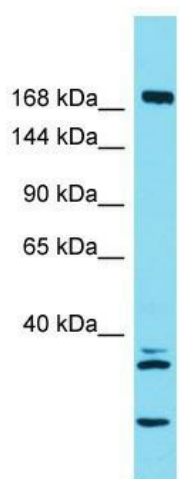
[View online »](#)

Synonyms: RP11-575L7.3

Note: Immunogen Sequence Homology: Dog: 100%; Rat: 100%; Horse: 100%; Human: 100%; Pig: 93%; Mouse: 93%; Bovine: 93%; Guinea pig: 86%; Rabbit: 79%; Zebrafish: 79%

Protein Families: Druggable Genome

Product images:



Host: Rabbit; Target Name: KIF27; Sample Tissue: Large Intestine Tumor lysates; Antibody Dilution: 1.0 ug/ml