

Product datasheet for TA334698

KIF13B Rabbit Polyclonal Antibody

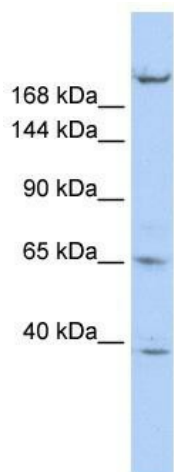
Product data:

Product Type:	Primary Antibodies
Applications:	IHC, WB
Recommended Dilution:	WB, IHC
Reactivity:	Human
Host:	Rabbit
Isotype:	IgG
Clonality:	Polyclonal
Immunogen:	The immunogen for anti-KIF13B antibody: synthetic peptide directed towards the N terminal of human KIF13B. Synthetic peptide located within the following region: SGKSYTMMGTADQPGLIPRLCSGLFERTQKEENEEQSFKEVSYMEIYNE
Formulation:	Liquid. Purified antibody supplied in 1x PBS buffer with 0.09% (w/v) sodium azide and 2% sucrose.
Purification:	Affinity Purified
Conjugation:	Unconjugated
Storage:	Store at -20°C as received.
Stability:	Stable for 12 months from date of receipt.
Predicted Protein Size:	203 kDa
Gene Name:	kinesin family member 13B
Database Link:	NP_056069 Entrez Gene 23303 Human Q9NQT8
Background:	KIF13B may be involved in reorganization of the cortical cytoskeleton. KIF13B may be functionally important for the intracellular trafficking of MAGUKs and associated protein complexes.
Synonyms:	GAKIN
Note:	Immunogen Sequence Homology: Dog: 100%; Pig: 100%; Rat: 100%; Human: 100%; Mouse: 100%; Bovine: 100%; Rabbit: 100%; Guinea pig: 100%; Horse: 92%

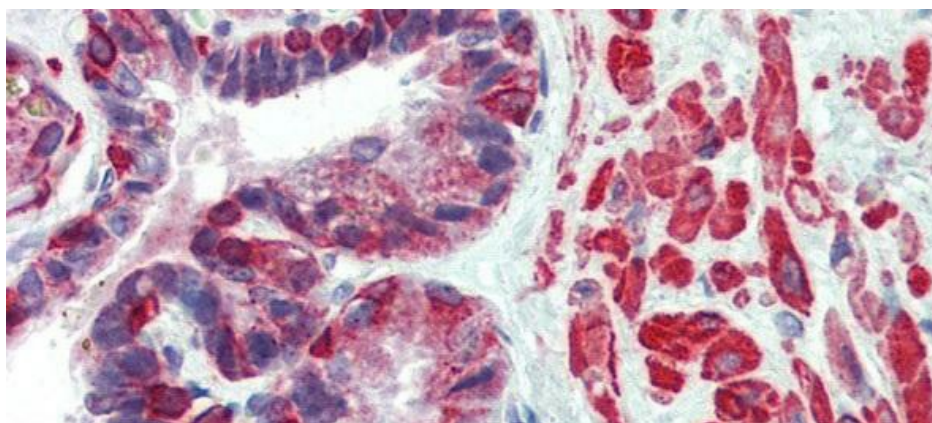

[View online »](#)

Protein Families: Druggable Genome

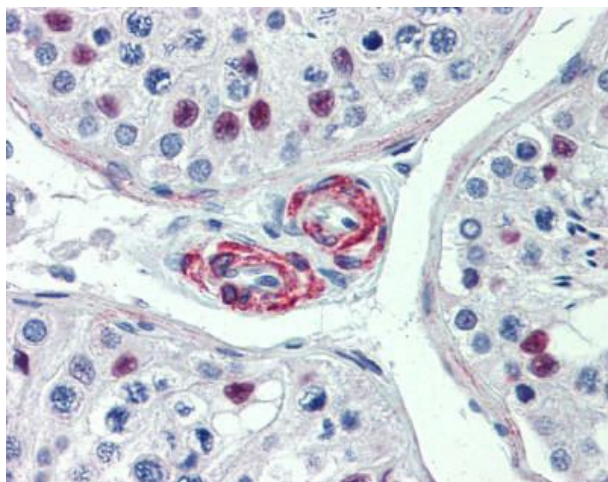
Product images:



WB Suggested Anti-KIF13B Antibody Titration: 1 ug/ml; Positive Control: HepG2 cell lysate KIF13B is supported by BioGPS gene expression data to be expressed in HepG2



Rabbit Anti-KIF13B Antibody; Paraffin Embedded Tissue: Human Prostate; Antibody Concentration: 5 ug/ml



Immunohistochemistry with prostate cell lysate tissue at an antibody concentration of 5.0 ug/ml using anti-KIF13B antibody