

## Product datasheet for **TA334696**

### KIF22 Rabbit Polyclonal Antibody

#### Product data:

Product Type:	Primary Antibodies
Applications:	WB
Recommended Dilution:	WB
Reactivity:	Human, Xenopus
Host:	Rabbit
Isotype:	IgG
Clonality:	Polyclonal
Immunogen:	The immunogen for anti-KIF22 antibody: synthetic peptide directed towards the N terminal of human KIF22. Synthetic peptide located within the following region: CSLEIANWRNHQETLKYQFDAFYGERSTQQDIYAGSVQPILRHLLLEGQNA
Formulation:	Liquid. Purified antibody supplied in 1x PBS buffer with 0.09% (w/v) sodium azide and 2% sucrose. <i>Note that this product is shipped as lyophilized powder to China customers.</i>
Purification:	Affinity Purified
Conjugation:	Unconjugated
Storage:	Store at -20°C as received.
Stability:	Stable for 12 months from date of receipt.
Predicted Protein Size:	73 kDa
Gene Name:	kinesin family member 22
Database Link:	<a href="#">NP_015556</a> <a href="#">Entrez Gene 3835 Human Q14807</a>



[View online »](#)

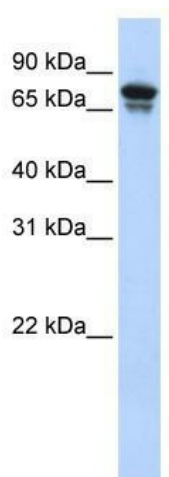
**Background:** KIF22 a member of kinesin-like protein family. This family of proteins are microtubule-dependent molecular motors that transport organelles within cells and move chromosomes during cell division. The C-terminal half of this protein has been shown to bind DNA. Studies with the *Xenopus* homolog suggests its essential role in metaphase chromosome alignment and maintenance. The protein encoded by this gene is a member of kinesin-like protein family. This family of proteins are microtubule-dependent molecular motors that transport organelles within cells and move chromosomes during cell division. The C-terminal half of this protein has been shown to bind DNA. Studies with the *Xenopus* homolog suggests its essential role in metaphase chromosome alignment and maintenance. Publication Note: This RefSeq record includes a subset of the publications that are available for this gene. Please see the Entrez Gene record to access additional publications.

**Synonyms:** A-328A3.2; KID; KNSL4; OBP; OBP-1; OBP-2; SEMDJL2

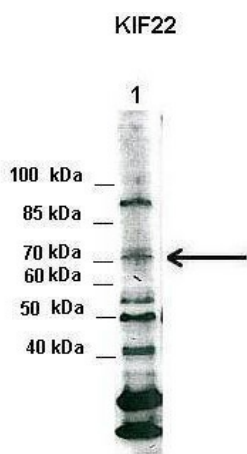
**Note:** Immunogen Sequence Homology: Dog: 100%; Pig: 100%; Rat: 100%; Horse: 100%; Human: 100%; Bovine: 100%; Guinea pig: 100%; Mouse: 93%; Yeast: 89%

**Protein Families:** Druggable Genome

### Product images:



WB Suggested Anti-KIF22 Antibody Titration: 0.2-1 ug/ml; ELISA Titer: 1:62500; Positive Control: Transfected 293T



Lanes: 1. *Xenopus laevis* egg extract 0.3 ul/lane;  
Primary Antibody Dilution: ; 1:1000; Secondary  
Antibody: ; Anti-Rabbit HRP; Secondary Antibody  
Dilution: ; 1:5000; Gene Name: ; KIF22; Submitted  
by: ; Anonymous;