

## Product datasheet for **TA334693**

### KIF1C Rabbit Polyclonal Antibody

#### Product data:

|                         |   |
|-------------------------|---|
| Product Type:           | Primary Antibodies  |
| Applications:           | WB  |
| Recommended Dilution:   | WB  |
| Reactivity:             | Human   |
| Host:                   | Rabbit  |
| Isotype:                | IgG   |
| Clonality:              | Polyclonal  |
| Immunogen:              | The immunogen for anti-KIF1C antibody: synthetic peptide directed towards the C terminal of human KIF1C. Synthetic peptide located within the following region:<br>GGGRSRGAGSAQPEPQHFPKHKHNSYPQPPQYPAQRPPGPRYPPTTPP   |
| Formulation:            | Liquid. Purified antibody supplied in 1x PBS buffer with 0.09% (w/v) sodium azide and 2% sucrose.<br><i>Note that this product is shipped as lyophilized powder to China customers.</i>   |
| Purification:           | Protein A purified  |
| Conjugation:            | Unconjugated  |
| Storage:                | Store at -20°C as received.   |
| Stability:              | Stable for 12 months from date of receipt.  |
| Predicted Protein Size: | 123 kDa   |
| Gene Name:              | kinesin family member 1C  |
| Database Link:          | <a href="#">NP_006603</a><br><a href="#">Entrez Gene 10749 Human</a><br><a href="#">O43896</a>  |
| Background:             | KIF1C represents a member of the Unc104 subfamily of kinesin-like proteins that are involved in the transport of mitochondria or synaptic vesicles in axons. KIF1C consists of an amino-terminal motor domain followed by a U104 domain and probably binds to target membranes through carboxyl-terminal sequences. |
| Synonyms:               | LTXS1; SATX2; SAX2; SPAX2; SPG58  |

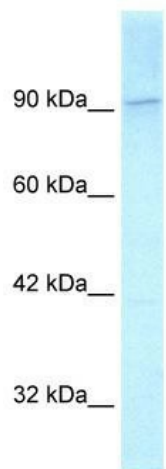


[View online »](#)

**Note:** Immunogen Sequence Homology: Dog: 100%; Pig: 100%; Human: 100%; Bovine: 100%; Rabbit: 100%; Horse: 92%; Rat: 85%; Mouse: 77%; Guinea pig: 77%

**Protein Families:** Druggable Genome

**Product images:**



WB Suggested Anti-KIF1C Antibody Titration: 2.5 ug/ml; Positive Control: HeLa cell lysate