

Product datasheet for TA334692

KIFC3 Rabbit Polyclonal Antibody

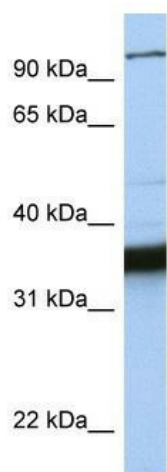
Product data:

Product Type:	Primary Antibodies
Applications:	WB
Recommended Dilution:	WB
Reactivity:	Human
Host:	Rabbit
Isotype:	IgG
Clonality:	Polyclonal
Immunogen:	The immunogen for anti-KIFC3 antibody: synthetic peptide directed towards the C terminal of human KIFC3. Synthetic peptide located within the following region: EHLEWEPACQTPQPSARAH SAPSSGTSSRPGSIRRKLQPSGKSRPLPV
Formulation:	Liquid. Purified antibody supplied in 1x PBS buffer with 0.09% (w/v) sodium azide and 2% sucrose.
Purification:	Affinity Purified
Conjugation:	Unconjugated
Storage:	Store at -20°C as received.
Stability:	Stable for 12 months from date of receipt.
Predicted Protein Size:	93 kDa
Gene Name:	kinesin family member C3
Database Link:	NP_005541 Entrez Gene 3801 Human Q9BVG8
Background:	KIFC3 belongs to the kinesin-like protein family. It contains 1 kinesin-motor domain. KIFC3 is the minus-end microtubule-dependent motor protein. It is involved in apically targeted transport.
Synonyms:	DKFZp686D23201; FLJ34694
Note:	Immunogen Sequence Homology: Human: 100%; Pig: 92%; Rat: 92%; Mouse: 92%; Guinea pig: 92%; Dog: 86%; Bovine: 86%; Rabbit: 86%


[View online »](#)

Protein Families: Druggable Genome

Product images:



WB Suggested Anti-KIFC3 Antibody Titration: 0.2-1 ug/ml; Positive Control: MCF7 cell lysate