

Product datasheet for **TA334691**

MKLP1 (KIF23) Rabbit Polyclonal Antibody

Product data:

Product Type:	Primary Antibodies
Applications:	WB
Recommended Dilution:	WB
Reactivity:	Human, Mouse
Host:	Rabbit
Isotype:	IgG
Clonality:	Polyclonal
Immunogen:	The immunogen for anti-KIF23 antibody: synthetic peptide directed towards the middle region of human KIF23. Synthetic peptide located within the following region: KDEKLLKQLKAIVTEPKTEKPERPSRERDREKVTQRSVSPSPVPLLFQPDQ
Formulation:	Liquid. Purified antibody supplied in 1x PBS buffer with 0.09% (w/v) sodium azide and 2% sucrose. <i>Note that this product is shipped as lyophilized powder to China customers.</i>
Purification:	Affinity Purified
Conjugation:	Unconjugated
Storage:	Store at -20°C as received.
Stability:	Stable for 12 months from date of receipt.
Predicted Protein Size:	98 kDa
Gene Name:	kinesin family member 23
Database Link:	NP_004847 Entrez Gene 71819 Mouse Entrez Gene 9493 Human Q02241



[View online »](#)

Background:

KIF23 is a member of kinesin-like protein family. This family includes microtubule-dependent molecular motors that transport organelles within cells and move chromosomes during cell division. This protein has been shown to cross-bridge antiparallel microtubules and drive microtubule movement in vitro. Alternate splicing of this gene results in two transcript variants encoding two different isoforms. The protein encoded by this gene is a member of kinesin-like protein family. This family includes microtubule-dependent molecular motors that transport organelles within cells and move chromosomes during cell division. This protein has been shown to cross-bridge antiparallel microtubules and drive microtubule movement in vitro. Alternate splicing of this gene results in two transcript variants encoding two different isoforms.

Synonyms:

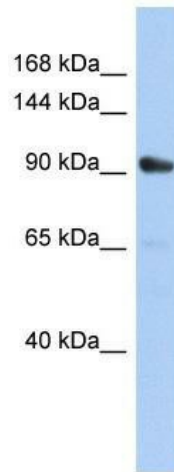
CHO1; KNLS5; MKLP-1; MKLP1

Note:

Immunogen Sequence Homology: Rat: 100%; Human: 100%; Bovine: 100%; Rabbit: 100%; Dog: 92%; Pig: 92%; Horse: 92%; Mouse: 92%; Zebrafish: 92%; Guinea pig: 92%

Protein Families:

Druggable Genome

Product images:

WB Suggested Anti-KIF23 Antibody Titration: 0.2-1 ug/ml; ELISA Titer: 1:62500; Positive Control: NCI-H226 cell lysate KIF23 is supported by BioGPS gene expression data to be expressed in NCIH226