

Product datasheet for **TA334690**

KIF5B Rabbit Polyclonal Antibody

Product data:

Product Type:	Primary Antibodies
Applications:	IHC, WB
Recommended Dilution:	WB, IHC
Reactivity:	Human, Mouse
Host:	Rabbit
Isotype:	IgG
Clonality:	Polyclonal
Immunogen:	The immunogen for anti-KIF5B antibody: synthetic peptide directed towards the C terminal of human KIF5B. Synthetic peptide located within the following region: ANEVKQAVEQQIQSHRETHQKQISSLRDEVEAKAKLITDLQDQNQKMMLE
Formulation:	Liquid. Purified antibody supplied in 1x PBS buffer with 0.09% (w/v) sodium azide and 2% sucrose. <i>Note that this product is shipped as lyophilized powder to China customers.</i>
Purification:	Affinity Purified
Conjugation:	Unconjugated
Storage:	Store at -20°C as received.
Stability:	Stable for 12 months from date of receipt.
Predicted Protein Size:	110 kDa
Gene Name:	kinesin family member 5B
Database Link:	NP_004512 Entrez Gene 16573 Mouse Entrez Gene 3799 Human P33176
Background:	Kinesin is the founding member of a superfamily of microtubule based motor proteins that perform force-generating tasks such as organelle transport and chromosome segregation. Kinesin consists of heavy and light chains both of which have been documented to bind a variety of potential linker or cargo proteins. KIF5B is an isoform of kinesin heavy chain.
Synonyms:	HEL-S-61; KINH; KNS; KNS1; UKHC



[View online »](#)

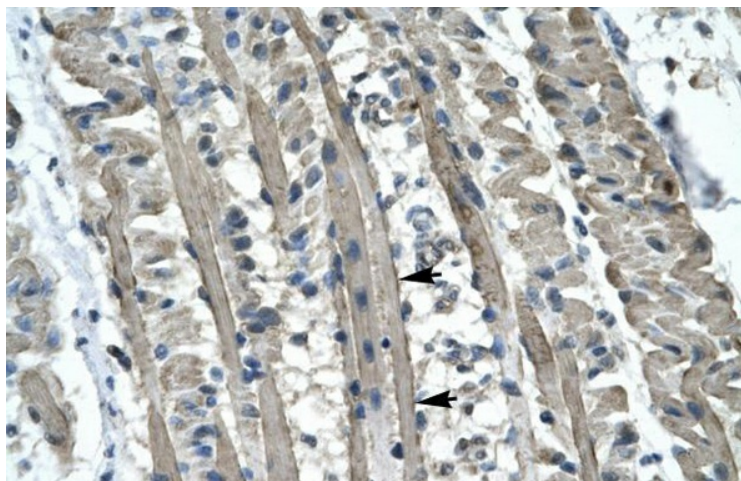
Note: Immunogen Sequence Homology: Dog: 100%; Pig: 100%; Rat: 100%; Horse: 100%; Human: 100%; Mouse: 100%; Bovine: 100%; Rabbit: 100%; Guinea pig: 100%; Zebrafish: 93%

Protein Families: Druggable Genome

Product images:



WB Suggested Anti-KIF5B Antibody Titration: 0.2-1 ug/ml; Positive Control: Human brain



Human Muscle