

## Product datasheet for **TA334689**

### **KIF5B Rabbit Polyclonal Antibody**

#### **Product data:**

<b>Product Type:</b>	Primary Antibodies
<b>Applications:</b>	IHC, WB
<b>Recommended Dilution:</b>	WB, IHC
<b>Reactivity:</b>	Human
<b>Host:</b>	Rabbit
<b>Isotype:</b>	IgG
<b>Clonality:</b>	Polyclonal
<b>Immunogen:</b>	The immunogen for anti-KIF5B antibody: synthetic peptide directed towards the N terminal of human KIF5B. Synthetic peptide located within the following region: CNIKVMCRFRPLNESEVNRGDKYIAKFQGEDTVVIASKPYAFDRVFSST
<b>Formulation:</b>	Liquid. Purified antibody supplied in 1x PBS buffer with 0.09% (w/v) sodium azide and 2% sucrose. <i>Note that this product is shipped as lyophilized powder to China customers.</i>
<b>Purification:</b>	Affinity Purified
<b>Conjugation:</b>	Unconjugated
<b>Storage:</b>	Store at -20°C as received.
<b>Stability:</b>	Stable for 12 months from date of receipt.
<b>Predicted Protein Size:</b>	110 kDa
<b>Gene Name:</b>	kinesin family member 5B
<b>Database Link:</b>	<a href="#">NP_004512</a> <a href="#">Entrez Gene 3799 Human P33176</a>
<b>Background:</b>	Kinesin is the founding member of a superfamily of microtubule based motor proteins that perform force-generating tasks such as organelle transport and chromosome segregation. Kinesin consists of heavy and light chains both of which have been documented to bind a variety of potential linker or cargo proteins. KIF5B is an isoform of kinesin heavy chain.
<b>Synonyms:</b>	HEL-S-61; KINH; KNS; KNS1; UKHC



[View online »](#)

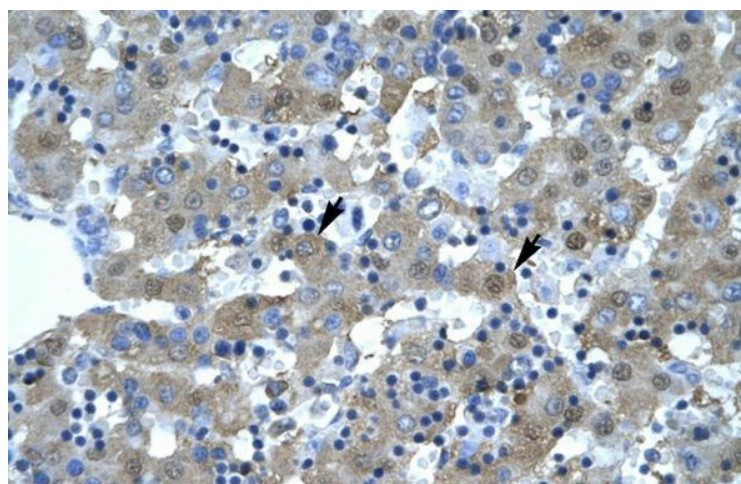
**Note:** Immunogen Sequence Homology: Dog: 100%; Pig: 100%; Human: 100%; Bovine: 100%; Rat: 93%; Mouse: 93%; Zebrafish: 86%

**Protein Families:** Druggable Genome

**Product images:**



WB Suggested Anti-KIF5B Antibody Titration: 0.2-1 ug/ml; Positive Control: Human brain



Human Liver