

Product datasheet for **TA334686**

KIF1A Rabbit Polyclonal Antibody

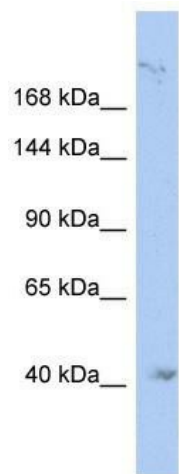
Product data:

Product Type:	Primary Antibodies
Applications:	WB
Recommended Dilution:	WB
Reactivity:	Human
Host:	Rabbit
Isotype:	IgG
Clonality:	Polyclonal
Immunogen:	The immunogen for anti-KIF1A antibody: synthetic peptide directed towards the N terminal of human KIF1A. Synthetic peptide located within the following region: TTIVNPKQPKETPKSFSFDYSYWSHTSPEDINYASQKQVYRDIGEMLQH
Formulation:	Liquid. Purified antibody supplied in 1x PBS buffer with 0.09% (w/v) sodium azide and 2% sucrose. <i>Note that this product is shipped as lyophilized powder to China customers.</i>
Purification:	Affinity Purified
Conjugation:	Unconjugated
Storage:	Store at -20°C as received.
Stability:	Stable for 12 months from date of receipt.
Predicted Protein Size:	191 kDa
Gene Name:	kinesin family member 1A
Database Link:	NP_004312 Entrez Gene 547 Human Q12756



[View online »](#)

- Background:** KIF1A is the motor for anterograde axonal transport of synaptic vesicle precursors. The protein encoded by this gene is a member of the kinesin family. This protein is highly similar to mouse heavy chain kinesin member 1A protein which is an anterograde motor protein that transports membranous organelles along axonal microtubules. It is thought that this protein may play a critical role in the development of axonal neuropathies resulting from impaired axonal transport. There are multiple polyadenylation sites found in this gene. Sequence Note: X90840.1 is a chimeric sequence. Only the ATSV region was propagated into this RefSeq record. [6/26/03, RefSeq staff]. Publication Note: This RefSeq record includes a subset of the publications that are available for this gene. Please see the Entrez Gene record to access additional publications.
- Synonyms:** ATSV; C2orf20; HSN2C; MRD9; SPG30; UNC104
- Note:** Immunogen Sequence Homology: Dog: 100%; Pig: 100%; Rat: 100%; Horse: 100%; Human: 100%; Mouse: 100%; Yeast: 100%; Bovine: 100%; Guinea pig: 100%; Rabbit: 79%; Zebrafish: 79%
- Protein Families:** Druggable Genome

Product images:

WB Suggested Anti-KIF1A Antibody Titration: 0.2-1 ug/ml; ELISA Titer: 1:62500; Positive Control: THP-1 cell lysate