

Product datasheet for **TA334685**

KIF3C Rabbit Polyclonal Antibody

Product data:

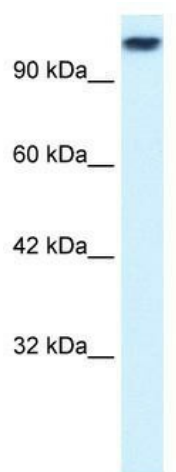
Product Type:	Primary Antibodies
Applications:	WB
Recommended Dilution:	WB
Reactivity:	Human
Host:	Rabbit
Isotype:	IgG
Clonality:	Polyclonal
Immunogen:	The immunogen for anti-KIF3C antibody: synthetic peptide directed towards the middle region of human KIF3C. Synthetic peptide located within the following region: LQEQKERLEEEKAAIQDDRSLVSEEKQKLLEEKEKMLEDLRREQQATELL
Formulation:	Liquid. Purified antibody supplied in 1x PBS buffer with 0.09% (w/v) sodium azide and 2% sucrose. <i>Note that this product is shipped as lyophilized powder to China customers.</i>
Purification:	Affinity Purified
Conjugation:	Unconjugated
Storage:	Store at -20°C as received.
Stability:	Stable for 12 months from date of receipt.
Predicted Protein Size:	89 kDa
Gene Name:	kinesin family member 3C
Database Link:	NP_002245 Entrez Gene 3797 Human O14782
Background:	KIF3C is a member of KIF3 family. It is highly enriched in neural tissues such as brain, spinal cord, and retina. It is an anterograde motor.
Synonyms:	KIF3C variant protein; kinesin family member 3C
Note:	Immunogen Sequence Homology: Dog: 100%; Pig: 100%; Rat: 100%; Horse: 100%; Human: 100%; Mouse: 100%; Rabbit: 100%; Bovine: 93%; Zebrafish: 86%; Guinea pig: 83%



[View online »](#)

Protein Families: Druggable Genome

Product images:



WB Suggested Anti-KIF3C Antibody Titration: 0.2-1 ug/ml; Positive Control: Hela cell lysate