

Product datasheet for **TA334684**

Kallikrein 6 (KLK6) Rabbit Polyclonal Antibody

Product data:

Product Type:	Primary Antibodies
Applications:	IHC, WB
Recommended Dilution:	WB, IHC
Reactivity:	Human
Host:	Rabbit
Isotype:	IgG
Clonality:	Polyclonal
Immunogen:	The immunogen for anti-KLK6 antibody: synthetic peptide directed towards the N terminal of human KLK6. Synthetic peptide located within the following region: KHNLQRESSQEQSSVRAVIHPDYDAASHDQDIMLLRLARPAKLSELIQ
Formulation:	Liquid. Purified antibody supplied in 1x PBS buffer with 0.09% (w/v) sodium azide and 2% sucrose. <i>Note that this product is shipped as lyophilized powder to China customers.</i>
Purification:	Affinity Purified
Conjugation:	Unconjugated
Storage:	Store at -20°C as received.
Stability:	Stable for 12 months from date of receipt.
Predicted Protein Size:	25 kDa
Gene Name:	kallikrein related peptidase 6
Database Link:	NP_001012982 Entrez Gene 5653 Human Q92876



[View online »](#)

Background:

Kallikreins are a subgroup of serine proteases having diverse physiological functions. Growing evidence suggests that many kallikreins are implicated in carcinogenesis and some have potential as novel cancer and other disease biomarkers. The gene that encodes KLK6 protein is one of the fifteen kallikrein subfamily members located in a cluster on chromosome 19. KLK6 is regulated by steroid hormones. In tissue culture, the enzyme has been found to generate amyloidogenic fragments from the amyloid precursor protein, suggesting a potential for involvement in Alzheimer's disease. Kallikreins are a subgroup of serine proteases having diverse physiological functions. Growing evidence suggests that many kallikreins are implicated in carcinogenesis and some have potential as novel cancer and other disease biomarkers. This gene is one of the fifteen kallikrein subfamily members located in a cluster on chromosome 19. The encoded enzyme is regulated by steroid hormones. In tissue culture, the enzyme has been found to generate amyloidogenic fragments from the amyloid precursor protein, suggesting a potential for involvement in Alzheimer's disease. Multiple alternatively spliced transcript variants that encode different isoforms have been identified for this gene.

Synonyms:

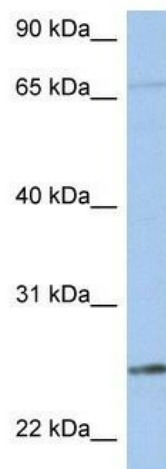
Bssp; hK6; Klk7; PRSS9; PRSS18; SP59

Note:

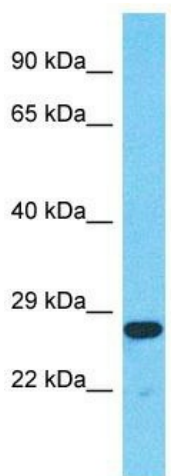
Immunogen Sequence Homology: Human: 100%; Dog: 92%; Horse: 92%

Protein Families:

Druggable Genome, Protease, Secreted Protein

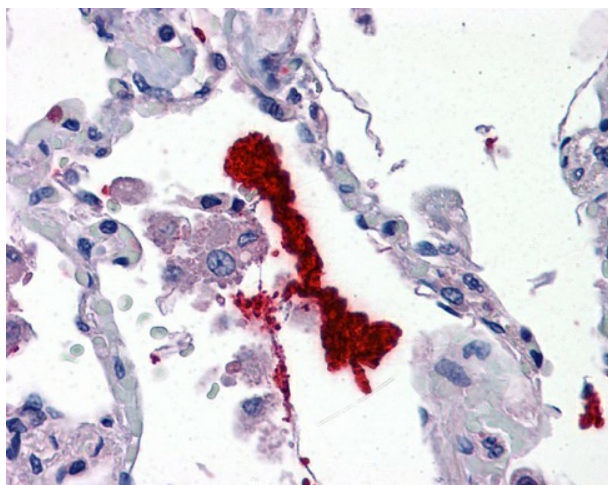
Product images:

WB Suggested Anti-KLK6 Antibody Titration: 0.2-1 ug/ml; Positive Control: 721_B cell lysate



Host: Rabbit
Target Name: KLK6
Sample Tissue: Jurkat Cell Lysate
Antibody Dilution: 1.0µg/ml

Host: Rabbit; Target Name: KLK6; Sample Tissue: Jurkat Whole Cell lysates; Antibody Dilution: 1.0 ug/ml



Lung