

Product datasheet for **TA334683**

Parathyroid hormone related protein (PTH1H) Rabbit Polyclonal Antibody

Product data:

Product Type:	Primary Antibodies
Applications:	IHC, WB
Recommended Dilution:	WB, IHC
Reactivity:	Human, Mouse
Host:	Rabbit
Isotype:	IgG
Clonality:	Polyclonal
Immunogen:	The immunogen for anti-Pthlh antibody: synthetic peptide corresponding to a region of Mouse. Synthetic peptide located within the following region: EVSPNSKPAPNTKNHPVRFSGSDDEGRYLTQETNKVETYKEQLKTPGKKK
Formulation:	Liquid. Purified antibody supplied in 1x PBS buffer with 0.09% (w/v) sodium azide and 2% sucrose.
Purification:	Affinity Purified
Conjugation:	Unconjugated
Storage:	Store at -20°C as received.
Stability:	Stable for 12 months from date of receipt.
Predicted Protein Size:	16 kDa
Gene Name:	parathyroid hormone-like hormone
Database Link:	NP_002811 Entrez Gene 19227 Mouse Entrez Gene 5744 Human P12272



[View online »](#)

Background:

Pthlh is a neuroendocrine peptide which is a critical regulator of cellular and organ growth, development, migration, differentiation and survival and of epithelial calcium ion transport. It regulates endochondral bone development and epithelial-mesenchymal interactions during the formation of the mammary glands and teeth. It is required for skeletal homeostasis. It promotes mammary mesenchyme differentiation and bud outgrowth by modulating mesenchymal cell responsiveness to BMPs. It upregulates BMPR1A expression in the mammary mesenchyme and this increases the sensitivity of these cells to BMPs and allows them to respond to BMP4 in a paracrine and/or autocrine fashion. BMP4 signaling in the mesenchyme, in turn, triggers epithelial outgrowth and augments MSX2 expression, which causes the mammary mesenchyme to inhibit hair follicle formation within the nipple sheath.

Synonyms:

BDE2; HHM; PLP; PTHR; PTHRP

Note:

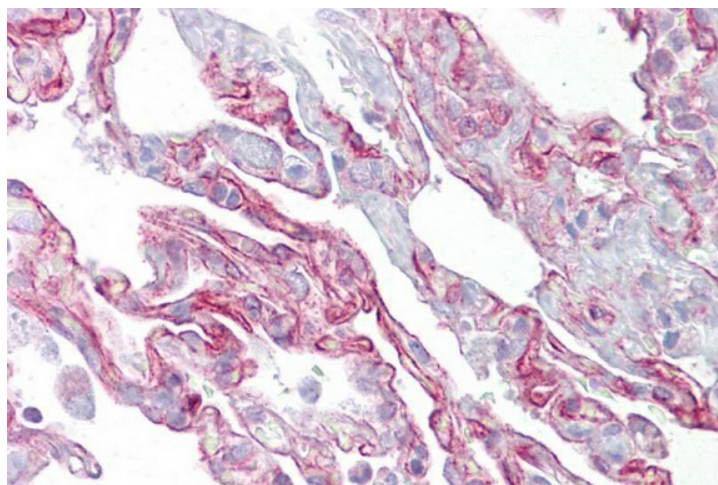
Immunogen Sequence Homology: Dog: 100%; Pig: 100%; Rat: 100%; Goat: 100%; Human: 100%; Mouse: 100%; Sheep: 100%; Bovine: 100%; Rabbit: 100%; Guinea pig: 100%; Horse: 85%

Protein Families:

Druggable Genome, Secreted Protein

Product images:

WB Suggested Anti-Pthlh Antibody Titration: 1 ug/ml; Positive Control: Mouse Brain lysate



Immunohistochemistry with Lung tissue at an antibody concentration of 5 ug/ml using anti-Pthlh antibody