

Product datasheet for TA334679

CNPase (CNP) Rabbit Polyclonal Antibody

Product data:

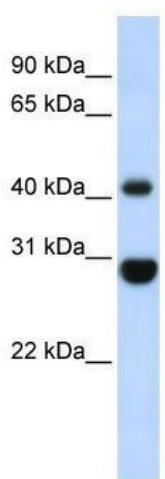
Product Type:	Primary Antibodies
Applications:	IHC, WB
Recommended Dilution:	WB, IHC
Reactivity:	Human
Host:	Rabbit
Isotype:	IgG
Clonality:	Polyclonal
Immunogen:	The immunogen for anti-CNP antibody: synthetic peptide directed towards the middle region of human CNP. Synthetic peptide located within the following region: LYSLGNGRWMLTLAKNMEVRAIFTGYGKGGKPVPTQGSRRKGGALQSCTII
Formulation:	Liquid. Purified antibody supplied in 1x PBS buffer with 0.09% (w/v) sodium azide and 2% sucrose. <i>Note that this product is shipped as lyophilized powder to China customers.</i>
Purification:	Affinity Purified
Conjugation:	Unconjugated
Storage:	Store at -20°C as received.
Stability:	Stable for 12 months from date of receipt.
Predicted Protein Size:	47 kDa
Gene Name:	2',3'-cyclic nucleotide 3' phosphodiesterase
Database Link:	NP_149124 Entrez Gene 1267 Human P09543
Background:	CNP belongs to the cyclic nucleotide phosphodiesterase family. It interacts with tubulin and promotes microtubule assembly for process outgrowth in oligodendrocytes. reduced CNP expression in the schizophrenic brain is relevant to disease etiology and therefore provide support for the general hypothesis that altered oligodendrocyte function is an etiological factor in schizophrenia.
Synonyms:	CNP1



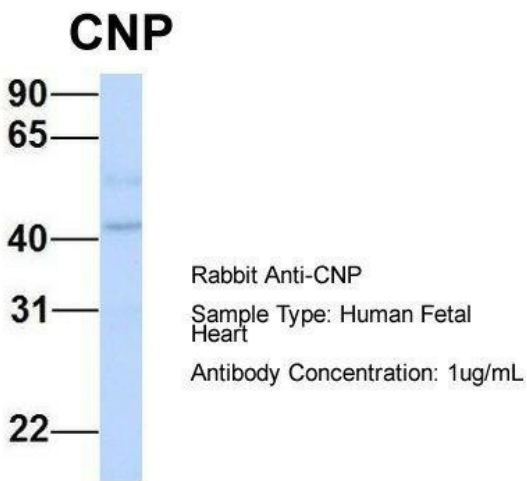
[View online »](#)

Note: Immunogen Sequence Homology: Human: 100%; Dog: 93%; Horse: 93%; Rabbit: 93%; Rat: 86%; Mouse: 86%; Pig: 79%

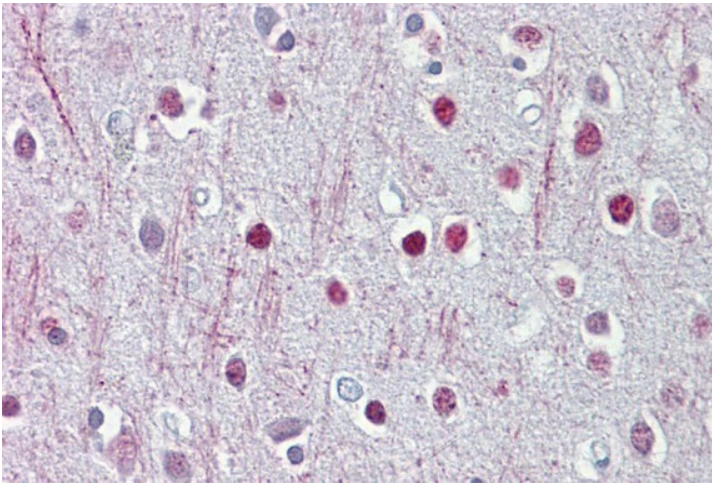
Product images:



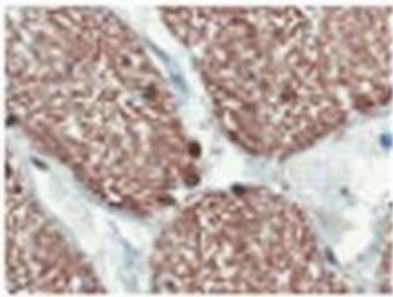
WB Suggested Anti-CNP Antibody Titration: 0.2-1 ug/ml
ELISA Titer: 1:62500
Positive Control: Fetal Muscle



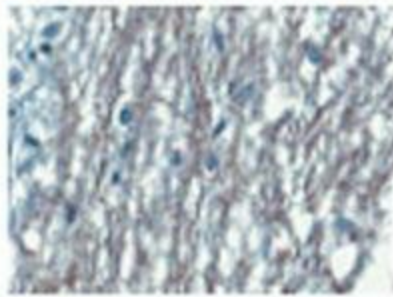
Host: Rabbit; Target Name: CNP; Sample Tissue: Human Fetal Heart; Antibody Dilution: 1.0 ug/ml



Brain, cortex



IHC- PZ



IHC- P

human optic nerve and spinal cord