

## Product datasheet for **TA334677**

### PHYHIP Rabbit Polyclonal Antibody

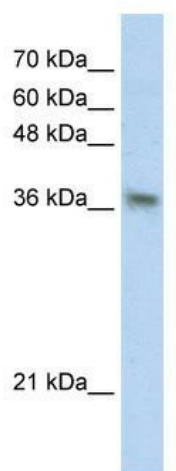
#### Product data:

Product Type:	Primary Antibodies
Applications:	WB
Recommended Dilution:	WB
Reactivity:	Human
Host:	Rabbit
Isotype:	IgG
Clonality:	Polyclonal
Immunogen:	The immunogen for anti-PHYHIP antibody: synthetic peptide directed towards the N terminal of human PHYHIP. Synthetic peptide located within the following region: KFKHRDVPTKLVAKAVPLPMTVRGHWFLSPRTEYSVAVQTAVKQSDGEYL
Formulation:	Liquid. Purified antibody supplied in 1x PBS buffer with 0.09% (w/v) sodium azide and 2% sucrose.
Purification:	Affinity Purified
Conjugation:	Unconjugated
Storage:	Store at -20°C as received.
Stability:	Stable for 12 months from date of receipt.
Predicted Protein Size:	38 kDa
Gene Name:	phytanoyl-CoA 2-hydroxylase interacting protein
Database Link:	<a href="#">NP_055574</a> <a href="#">Entrez Gene 9796 Human</a> <a href="#">Q92561</a>
Background:	PHYHIP interacts with PHYH suggests a role in the development of the central system.
Synonyms:	DYRK1AP3; PAHX-AP; PAHXAP1
Note:	Immunogen Sequence Homology: Dog: 100%; Pig: 100%; Rat: 100%; Horse: 100%; Human: 100%; Mouse: 100%; Bovine: 100%; Rabbit: 100%; Guinea pig: 100%; Zebrafish: 85%



[View online »](#)

Product images:



WB Suggested Anti-PHYHIP Antibody Titration:  
0.2-1 ug/ml; Positive Control: Transfected 293T