

Product datasheet for **TA334676**

SMPDL3B Rabbit Polyclonal Antibody

Product data:

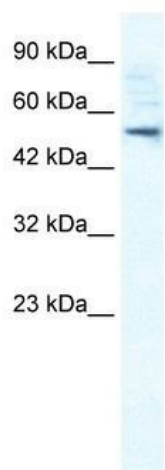
Product Type:	Primary Antibodies
Applications:	IHC, WB
Recommended Dilution:	WB, IHC
Reactivity:	Human
Host:	Rabbit
Isotype:	IgG
Clonality:	Polyclonal
Immunogen:	The immunogen for anti-SMPDL3B antibody: synthetic peptide directed towards the N terminal of human SMPDL3B. Synthetic peptide located within the following region: ILWTGDDTPHVPDEKLGEEAAVLEIVERLTKLIREVFPDTKVYAALGNHDF
Formulation:	Liquid. Purified antibody supplied in 1x PBS buffer with 0.09% (w/v) sodium azide and 2% sucrose. <i>Note that this product is shipped as lyophilized powder to China customers.</i>
Purification:	Affinity Purified
Conjugation:	Unconjugated
Storage:	Store at -20°C as received.
Stability:	Stable for 12 months from date of receipt.
Predicted Protein Size:	52 kDa
Gene Name:	sphingomyelin phosphodiesterase acid like 3B
Database Link:	NP_055289 Entrez Gene 27293 Human Q92485
Background:	Located on chromosome 1, this gene encodes for acid sphingomyelinase-like phosphodiesterase 3b precursor protein.
Synonyms:	ASML3B
Note:	Immunogen Sequence Homology: Pig: 100%; Human: 100%; Guinea pig: 100%; Horse: 92%; Rabbit: 92%; Dog: 85%; Rat: 85%; Mouse: 85%; Bovine: 85%; Zebrafish: 85%



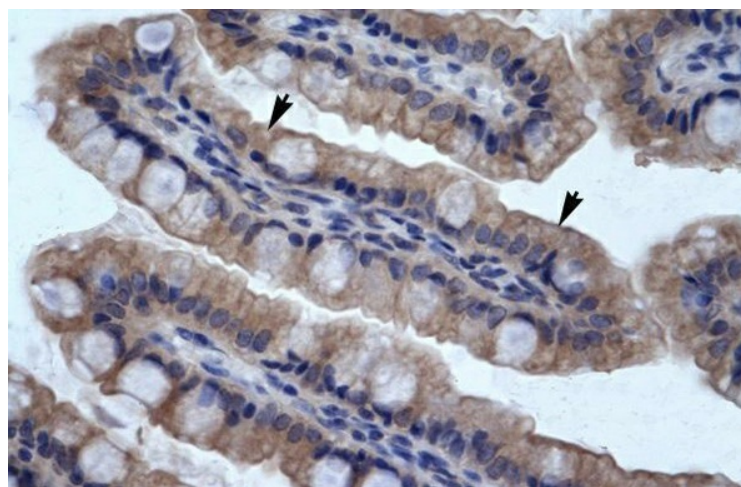
[View online »](#)

Protein Families: Secreted Protein

Product images:



WB Suggested Anti-SMPDL3B Antibody Titration: 0.2-1 ug/ml; Positive Control: Raji cell lysate
SMPDL3B is supported by BioGPS gene expression data to be expressed in Raji



Human Intestine