

## Product datasheet for **TA334675**

### Chymotrypsin (CTRC) Rabbit Polyclonal Antibody

#### Product data:

Product Type:	Primary Antibodies
Applications:	WB
Recommended Dilution:	WB
Reactivity:	Human
Host:	Rabbit
Isotype:	IgG
Clonality:	Polyclonal
Immunogen:	The immunogen for anti-CTRC antibody: synthetic peptide directed towards the N terminal of human CTRC. Synthetic peptide located within the following region: LGITVLAALLACASSCGVPSFPPNLSARVGGEDARPHSWPWQISLQYLK
Formulation:	Liquid. Purified antibody supplied in 1x PBS buffer with 0.09% (w/v) sodium azide and 2% sucrose. <i>Note that this product is shipped as lyophilized powder to China customers.</i>
Purification:	Affinity Purified
Conjugation:	Unconjugated
Storage:	Store at -20°C as received.
Stability:	Stable for 12 months from date of receipt.
Predicted Protein Size:	27 kDa
Gene Name:	chymotrypsin C
Database Link:	<a href="#">NP_009203</a> <a href="#">Entrez Gene 11330 Human Q99895</a>
Background:	CTRC is a member of the peptidase S1 family. The protein is a serum calcium-decreasing factor that has chymotrypsin-like protease activity. Alternatively spliced transcript variants have been observed, but their full-length nature has not been determined. This gene encodes a member of the peptidase S1 family. The encoded protein is a serum calcium-decreasing factor that has chymotrypsin-like protease activity. Alternatively spliced transcript variants have been observed, but their full-length nature has not been determined.



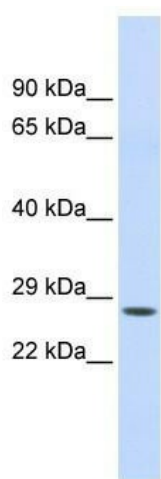
[View online »](#)

**Synonyms:** CLCR; ELA4

**Note:** Immunogen Sequence Homology: Pig: 100%; Human: 100%; Rabbit: 93%; Dog: 86%; Rat: 86%; Mouse: 86%; Bovine: 79%

**Protein Families:** Druggable Genome, Protease

**Product images:**



WB Suggested Anti-CTRC Antibody Titration: 0.2-1 ug/ml; ELISA Titer: 1:312500; Positive Control: Human Liver