

Product datasheet for **TA334674**

Kinesin 5A (KIF5A) Rabbit Polyclonal Antibody

Product data:

Product Type:	Primary Antibodies
Applications:	IHC, WB
Recommended Dilution:	WB, IHC
Reactivity:	Human
Host:	Rabbit
Isotype:	IgG
Clonality:	Polyclonal
Immunogen:	The immunogen for anti-KIF5A antibody: synthetic peptide directed towards the middle region of human KIF5A. Synthetic peptide located within the following region: LEESYDSLSDLAKLQAQETVHEVALKDKEPDTQDADEVKKALELQMESH
Formulation:	Liquid. Purified antibody supplied in 1x PBS buffer with 0.09% (w/v) sodium azide and 2% sucrose. <i>Note that this product is shipped as lyophilized powder to China customers.</i>
Purification:	Affinity Purified
Conjugation:	Unconjugated
Storage:	Store at -20°C as received.
Stability:	Stable for 12 months from date of receipt.
Predicted Protein Size:	117 kDa
Gene Name:	kinesin family member 5A
Database Link:	NP_004975 Entrez Gene 3798 Human Q12840
Background:	KIF5A is a member of the kinesin family of proteins. Members of this family are part of a multisubunit complex that functions as a microtubule motor in intracellular organelle transport. Mutations in this gene cause autosomal dominant spastic paraplegia 10.
Synonyms:	D12S1889; MY050; NKHC; SPG10
Note:	Immunogen Sequence Homology: Dog: 100%; Human: 100%; Rabbit: 100%; Pig: 93%; Rat: 93%; Horse: 93%; Mouse: 93%; Guinea pig: 86%; Bovine: 79%



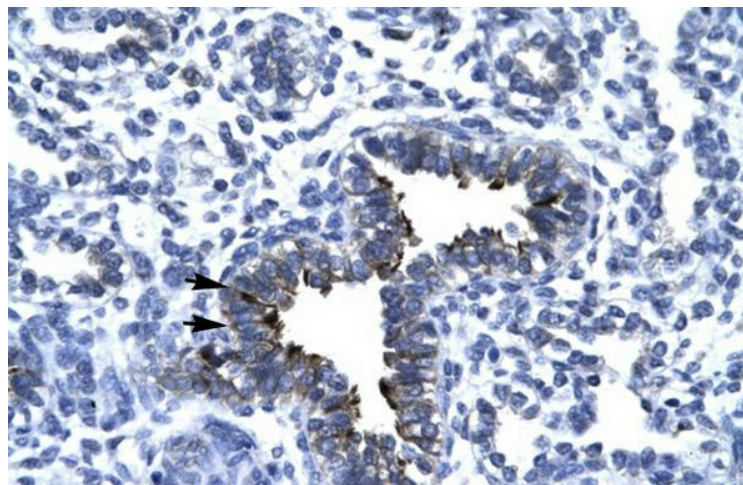
[View online »](#)

Protein Families: Druggable Genome

Product images:



WB Suggested Anti-KIF5A Antibody Titration: 0.2-1 ug/ml; Positive Control: Human brain



Rabbit Anti-KIF5A antibody; Paraffin Embedded Tissue: Human Lung cell Cellular Data: bronchiole epithelium of renal tubule; Antibody Concentration: 4.0-8.0 ug/ml; Magnification: 400X