

## Product datasheet for **TA334673**

### SPINK1 Rabbit Polyclonal Antibody

#### Product data:

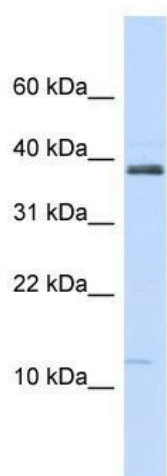
Product Type:	Primary Antibodies
Applications:	WB
Recommended Dilution:	WB
Reactivity:	Human
Host:	Rabbit
Isotype:	IgG
Clonality:	Polyclonal
Immunogen:	The immunogen for anti-SPINK1 antibody: synthetic peptide directed towards the N terminal of human SPINK1. Synthetic peptide located within the following region: KVTGIFLLSALALLSLSGNTGADSLGREAKCYNELNGCTKIYDPVCGTDG
Formulation:	Liquid. Purified antibody supplied in 1x PBS buffer with 0.09% (w/v) sodium azide and 2% sucrose. <i>Note that this product is shipped as lyophilized powder to China customers.</i>
Purification:	Affinity Purified
Conjugation:	Unconjugated
Storage:	Store at -20°C as received.
Stability:	Stable for 12 months from date of receipt.
Predicted Protein Size:	8 kDa
Gene Name:	serine peptidase inhibitor, Kazal type 1
Database Link:	<a href="#">NP_003113</a> <a href="#">Entrez Gene 6690 Human P00995</a>
Background:	SPINK1 is a trypsin inhibitor, which is secreted from pancreatic acinar cells into pancreatic juice. It is thought to function in the prevention of trypsin-catalyzed premature activation of zymogens within the pancreas and the pancreatic duct. Mutations in this gene are associated with hereditary pancreatitis and tropical calcific pancreatitis.
Synonyms:	PCTT; PSTI; Spink3; TATI; TCP
Note:	Immunogen Sequence Homology: Human: 100%; Rabbit: 93%



[View online »](#)

Protein Families: Druggable Genome, Secreted Protein

### Product images:



WB Suggested Anti-SPINK1 Antibody Titration:  
0.2-1 ug/ml; ELISA Titer: 1:62500; Positive Control:  
MCF7 cell lysate