

Product datasheet for TA334672

Chymotrypsin like protease (CTRL) Rabbit Polyclonal Antibody

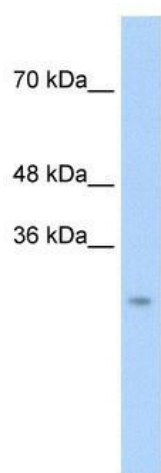
Product data:

Product Type:	Primary Antibodies
Applications:	WB
Recommended Dilution:	WB
Reactivity:	Human
Host:	Rabbit
Isotype:	IgG
Clonality:	Polyclonal
Immunogen:	The immunogen for anti-CTRL antibody: synthetic peptide directed towards the N terminal of human CTRL. Synthetic peptide located within the following region: SQSWVWTAAHCNVSPGRHFVVLGEYDRSSNAEPLQVLSVSRAITHPSWNS
Formulation:	Liquid. Purified antibody supplied in 1x PBS buffer with 0.09% (w/v) sodium azide and 2% sucrose.
Purification:	Affinity Purified
Conjugation:	Unconjugated
Storage:	Store at -20°C as received.
Stability:	Stable for 12 months from date of receipt.
Predicted Protein Size:	28 kDa
Gene Name:	chymotrypsin like
Database Link:	NP_001898 Entrez Gene 1506 Human P40313
Background:	The function remains unknown.
Synonyms:	CTRL1
Note:	Immunogen Sequence Homology: Human: 100%; Dog: 92%; Rat: 85%; Mouse: 83%; Pig: 77%
Protein Families:	Druggable Genome, Protease



[View online »](#)

Product images:



WB Suggested Anti-CTRL Antibody Titration: 0.2-1 ug/ml; Positive Control: Transfected 293T