

Product datasheet for TA334671

Chymotrypsin like protease (CTRL) Rabbit Polyclonal Antibody

Product data:

Product Type:	Primary Antibodies
Applications:	WB
Recommended Dilution:	WB
Reactivity:	Human
Host:	Rabbit
Isotype:	IgG
Clonality:	Polyclonal
Immunogen:	The immunogen for anti-CTRL antibody: synthetic peptide directed towards the N terminal of human CTRL. Synthetic peptide located within the following region: LLLSLTLSLVLLGSSWGCGIPAIKPALSFSQRIVNGENAVLGSWPWQVSL
Formulation:	Liquid. Purified antibody supplied in 1x PBS buffer with 0.09% (w/v) sodium azide and 2% sucrose. <i>Note that this product is shipped as lyophilized powder to China customers.</i>
Purification:	Affinity Purified
Conjugation:	Unconjugated
Storage:	Store at -20°C as received.
Stability:	Stable for 12 months from date of receipt.
Predicted Protein Size:	25 kDa
Gene Name:	chymotrypsin like
Database Link:	NP_001898 Entrez Gene 1506 Human P40313
Background:	CTRL contains 1 F-box domain. It is substrate-recognition component of the SCF (SKP1-CUL1-F-box protein)-type E3 ubiquitin ligase complex. The protein directly interacts with SKP1A and CUL1. A chromosomal aberration involving FBXO25 is a cause of X-linked mental retardation (XLMR).
Synonyms:	CTRL1

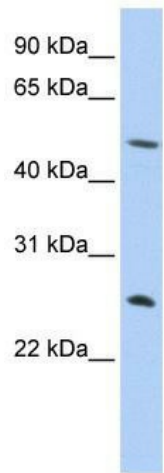


[View online »](#)

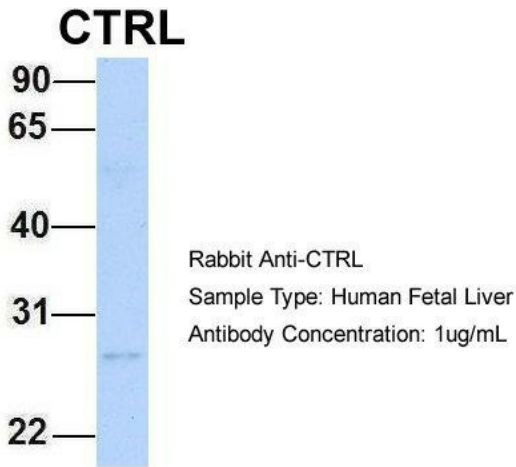
Note: Immunogen Sequence Homology: Dog: 100%; Rat: 100%; Human: 100%; Pig: 92%; Mouse: 85%

Protein Families: Druggable Genome, Protease

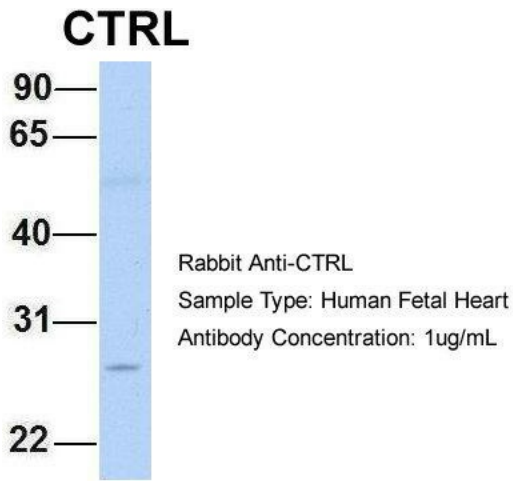
Product images:



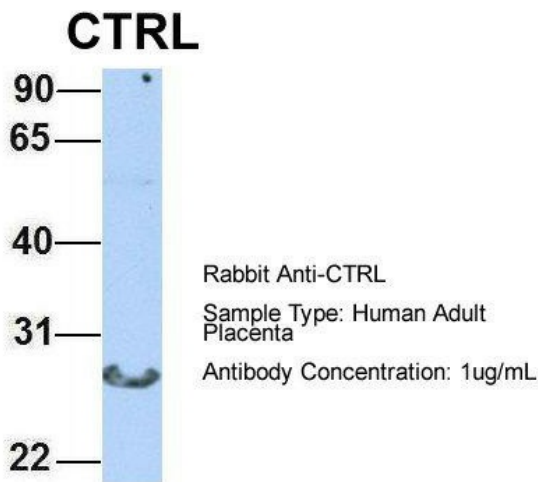
WB Suggested Anti-CTRL Antibody Titration: 0.2-1 ug/ml; ELISA Titer: 1:12500; Positive Control: HepG2 cell lysate



Host: Rabbit; Target Name: CTRL; Sample Tissue: Human Fetal Liver; Antibody Dilution: 1.0 ug/ml



Host: Rabbit; Target Name: CTRL; Sample Tissue: Human Fetal Heart; Antibody Dilution: 1.0 ug/ml



Host: Rabbit; Target Name: CTRL; Sample Tissue: Human Adult Placenta; Antibody Dilution: 1.0 ug/ml