

Product datasheet for **TA334670**

Carboxypeptidase B (CPB1) Rabbit Polyclonal Antibody

Product data:

Product Type:	Primary Antibodies
Applications:	WB
Recommended Dilution:	WB
Reactivity:	Human
Host:	Rabbit
Isotype:	IgG
Clonality:	Polyclonal
Immunogen:	The immunogen for anti-CPB1 antibody: synthetic peptide directed towards the N terminal of human CPB1. Synthetic peptide located within the following region: SRVRATGHSYEKYNKWETIEAWTQQVATENPALISRSVIGTTFEGRAIYL
Formulation:	Liquid. Purified antibody supplied in 1x PBS buffer with 0.09% (w/v) sodium azide and 2% sucrose. <i>Note that this product is shipped as lyophilized powder to China customers.</i>
Purification:	Affinity Purified
Conjugation:	Unconjugated
Storage:	Store at -20°C as received.
Stability:	Stable for 12 months from date of receipt.
Predicted Protein Size:	35 kDa
Gene Name:	carboxypeptidase B1
Database Link:	NP_001862 Entrez Gene 1360 Human P15086
Background:	The specific function of the protein remains unknown. Three different procarboxypeptidases A and two different procarboxypeptidases B have been isolated. The B1 and B2 forms differ from each other mainly in isoelectric point. Carboxypeptidase B1 is a highly tissue-specific protein and is a useful serum marker for acute pancreatitis and dysfunction of pancreatic transplants. It is not elevated in pancreatic carcinoma.
Synonyms:	CPB; PASP; PCPB

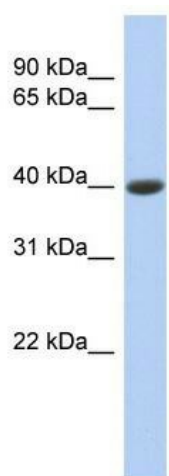


[View online »](#)

Note: Immunogen Sequence Homology: Human: 100%; Pig: 92%; Rat: 92%; Guinea pig: 92%; Horse: 85%; Bovine: 85%; Rabbit: 85%

Protein Families: Druggable Genome, Protease, Secreted Protein

Product images:



WB Suggested Anti-CPB1 Antibody Titration: 0.2-1 ug/ml; ELISA Titer: 1:62500; Positive Control: COLO205 cell lysate