

Product datasheet for TA334669

Bile salt activated lipase (CEL) Rabbit Polyclonal Antibody

Product data:

Product Type:	Primary Antibodies
Applications:	WB
Recommended Dilution:	WB
Reactivity:	Human
Host:	Rabbit
Isotype:	IgG
Clonality:	Polyclonal
Immunogen:	The immunogen for anti-CEL antibody: synthetic peptide directed towards the middle region of human CEL. Synthetic peptide located within the following region: VTPTGDSETAPVPPTGDGSGAPPVPPTGDSEAAPVPPTDDSKEAQMPAVIR
Formulation:	Liquid. Purified antibody supplied in 1x PBS buffer with 0.09% (w/v) sodium azide and 2% sucrose. <i>Note that this product is shipped as lyophilized powder to China customers.</i>
Purification:	Affinity Purified
Conjugation:	Unconjugated
Storage:	Store at -20°C as received.
Stability:	Stable for 12 months from date of receipt.
Predicted Protein Size:	80 kDa
Gene Name:	carboxyl ester lipase
Database Link:	NP_001798 Entrez Gene 1056 Human



[View online »](#)

Background:

CEL catalyzes fat and vitamin absorption. CEL acts in concert with pancreatic lipase and colipase for the complete digestion of dietary triglycerides. The protein encoded by this gene is a glycoprotein secreted from the pancreas into the digestive tract and from the lactating mammary gland into human milk. The physiological role of this protein is in cholesterol and lipid-soluble vitamin ester hydrolysis and absorption. This encoded protein promotes large chylomicron production in the intestine. Also its presence in plasma suggests its interactions with cholesterol and oxidized lipoproteins to modulate the progression of atherosclerosis. In pancreatic tumoral cells, this encoded protein is thought to be sequestered within the Golgi compartment and is probably not secreted. This gene contains a variable number of tandem repeat (VNTR) polymorphism in the coding region that may influence the function of the encoded protein. Publication Note: This RefSeq record includes a subset of the publications that are available for this gene. Please see the Entrez Gene record to access additional publications.

Synonyms:

BAL; BSDL; BSSL; CEase; CELL; FAP; FAPP; LIPA; MODY8

Note:

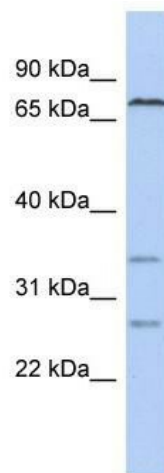
Immunogen Sequence Homology: Rat: 100%; Human: 100%; Pig: 85%; Horse: 77%; Mouse: 77%

Protein Families:

Druggable Genome

Protein Pathways:

Glycerolipid metabolism, Metabolic pathways, Steroid biosynthesis

Product images:

WB Suggested Anti-CEL Antibody Titration: 0.2-1 ug/ml; ELISA Titer: 1:312500; Positive Control: SH-SY5Y cell lysate