

Product datasheet for **TA334666**

P protein (OCA2) Rabbit Polyclonal Antibody

Product data:

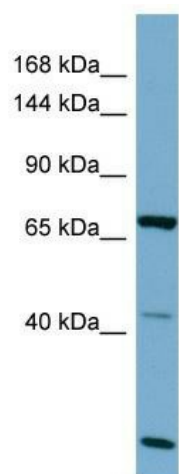
Product Type:	Primary Antibodies
Applications:	WB
Recommended Dilution:	WB
Reactivity:	Human
Host:	Rabbit
Isotype:	IgG
Clonality:	Polyclonal
Immunogen:	The immunogen for anti-OCA2 antibody is: synthetic peptide directed towards the C-terminal region of Human OCA2. Synthetic peptide located within the following region: CLIAAVLSAFLDNVTTMLLFTPVITRLCEVLNLDPRQVLIAEVIFTNIGG
Formulation:	Liquid. Purified antibody supplied in 1x PBS buffer with 0.09% (w/v) sodium azide and 2% sucrose. <i>Note that this product is shipped as lyophilized powder to China customers.</i>
Purification:	Affinity Purified
Conjugation:	Unconjugated
Storage:	Store at -20°C as received.
Stability:	Stable for 12 months from date of receipt.
Predicted Protein Size:	73 kDa
Gene Name:	OCA2 melanosomal transmembrane protein
Database Link:	NP_000266 Entrez Gene 4948 Human Q04671
Background:	OCA2 is believed to be an integral membrane protein involved in small molecule transport, specifically tyrosine - a precursor of melanin. Mutations in the gene encoding OCA2 result in type 2 oculocutaneous albinism.
Synonyms:	BEY; BEY1; BEY2; BOCA; D15S12; EYCL; EYCL2; EYCL3; HCL3; P; PED; SHEP1
Note:	Immunogen Sequence Homology: Dog: 100%; Pig: 100%; Rat: 100%; Horse: 100%; Human: 100%; Mouse: 100%; Bovine: 100%; Rabbit: 100%; Zebrafish: 100%; Guinea pig: 100%



[View online »](#)

Protein Families: Druggable Genome, Transmembrane

Product images:



Host: Rabbit; Target Name: OCA2; Sample Tissue: OVCAR-3 Whole cell lysates; Antibody Dilution: 1.0 ug/ml