

Product datasheet for **TA334665**

PTCH1 Rabbit Polyclonal Antibody

Product data:

Product Type:	Primary Antibodies
Applications:	IHC, WB
Recommended Dilution:	WB, IHC
Reactivity:	Human
Host:	Rabbit
Isotype:	IgG
Clonality:	Polyclonal
Immunogen:	The immunogen for anti-PTCH1 antibody: synthetic peptide directed towards the C terminal of human PTCH1. Synthetic peptide located within the following region: TILGVLNGLVLLPVLLSFFGPYPEVSPANGLNRLPTPSPEPPPSVVRFAM
Formulation:	Liquid. Purified antibody supplied in 1x PBS buffer with 0.09% (w/v) sodium azide and 2% sucrose. <i>Note that this product is shipped as lyophilized powder to China customers.</i>
Purification:	Affinity Purified
Conjugation:	Unconjugated
Storage:	Store at -20°C as received.
Stability:	Stable for 12 months from date of receipt.
Predicted Protein Size:	37 kDa
Gene Name:	patched 1
Database Link:	NP_000255 Entrez Gene 5727 Human Q13635
Background:	PTCH1 is a member of the patched gene family. The protein is the receptor for sonic hedgehog, a secreted molecule implicated in the formation of embryonic structures and in tumorigenesis. It functions as a tumor suppressor. Mutations of its gene have been associated with nevoid basal cell carcinoma syndrome, esophageal squamous cell carcinoma, trichoepitheliomas, transitional cell carcinomas of the bladder, as well as holoprosencephaly.
Synonyms:	BCNS; HPE7; NBCCS; PTC; PTC1; PTCH; PTCH11



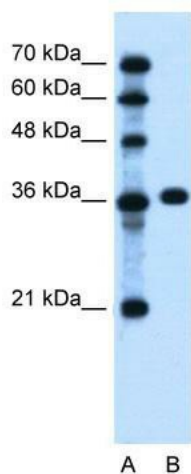
[View online »](#)

Note: Immunogen Sequence Homology: Dog: 100%; Pig: 100%; Rat: 100%; Horse: 100%; Human: 100%; Mouse: 100%; Bovine: 100%; Guinea pig: 100%; Rabbit: 93%; Zebrafish: 79%

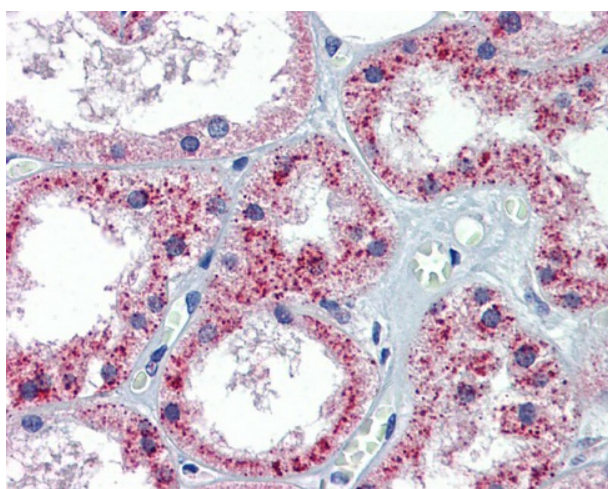
Protein Families: Druggable Genome, ES Cell Differentiation/IPS, Transmembrane

Protein Pathways: Basal cell carcinoma, Hedgehog signaling pathway, Pathways in cancer

Product images:



WB Suggested Anti-PTCH1 Antibody Titration: 0.2-1 ug/ml; Positive Control: Jurkat cell lysate



Kidney