

Product datasheet for TA334664

MICA Rabbit Polyclonal Antibody

Product data:

Product Type:	Primary Antibodies
Applications:	WB
Recommended Dilution:	WB
Reactivity:	Human
Host:	Rabbit
Isotype:	IgG
Clonality:	Polyclonal
Immunogen:	The immunogen for anti-MICA antibody: synthetic peptide directed towards the middle region of human MICA. Synthetic peptide located within the following region: LRRTVPPMVNVTRSEASEGNITVTCRASGFYPWNITLSWRQDGVSLSHDT
Formulation:	Liquid. Purified antibody supplied in 1x PBS buffer with 0.09% (w/v) sodium azide and 2% sucrose. <i>Note that this product is shipped as lyophilized powder to China customers.</i>
Purification:	Protein A purified
Conjugation:	Unconjugated
Storage:	Store at -20°C as received.
Stability:	Stable for 12 months from date of receipt.
Predicted Protein Size:	42 kDa
Gene Name:	MHC class I polypeptide-related sequence A
Database Link:	NP_000238 Entrez Gene 100507436 Human Q29983



Background:

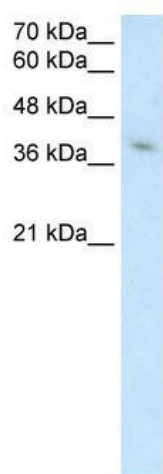
MICA is expressed on the cell surface, although unlike canonical class I molecules does not seem to associate with beta-2-microglobulin. It is thought that MICA functions as a stress-induced antigen that is broadly recognized by intestinal epithelial gamma delta T cells. MICA encodes the highly polymorphic MHC (HLA) class I chain-related gene A. The protein product is expressed on the cell surface, although unlike canonical class I molecules does not seem to associate with beta-2-microglobulin. It is thought that MICA functions as a stress-induced antigen that is broadly recognized by intestinal epithelial gamma delta T cells.

Synonyms:

MIC-A; PERB11.1

Note:

Immunogen Sequence Homology: Human: 100%

Product images:


WB Suggested Anti-MICA Antibody Titration:
2.5 ug/ml; Positive Control: Jurkat cell lysate