

Product datasheet for TA334662

MICA Rabbit Polyclonal Antibody

Product data:

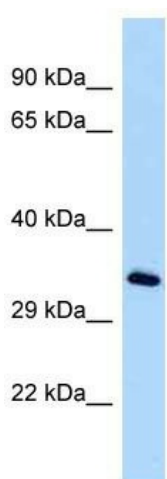
Product Type:	Primary Antibodies
Applications:	WB
Recommended Dilution:	WB
Reactivity:	Human
Host:	Rabbit
Isotype:	IgG
Clonality:	Polyclonal
Immunogen:	The immunogen for anti-MICA antibody is: synthetic peptide directed towards the middle region of Human MICA. Synthetic peptide located within the following region: VQSGFLAEVHLDGQPFLRYDRQKCRAKPQGQWAEDVLGNKTWDRETRDLT
Formulation:	Liquid. Purified antibody supplied in 1x PBS buffer with 0.09% (w/v) sodium azide and 2% sucrose. <i>Note that this product is shipped as lyophilized powder to China customers.</i>
Purification:	Affinity Purified
Conjugation:	Unconjugated
Storage:	Store at -20°C as received.
Stability:	Stable for 12 months from date of receipt.
Predicted Protein Size:	36 kDa
Gene Name:	MHC class I polypeptide-related sequence A
Database Link:	NP_001170990 Entrez Gene 100507436 Human Q29983
Background:	MICA encodes the highly polymorphic MHC (HLA) class I chain-related gene A. The protein product is expressed on the cell surface, although unlike canonical class I molecules does not seem to associate with beta-2-microglobulin. It is thought that MICA functions as a stress-induced antigen that is broadly recognized by intestinal epithelial gamma delta T cells. Alternative splicing results in multiple transcript variants.
Synonyms:	MIC-A; PERB11.1



[View online »](#)

Note: Immunogen Sequence Homology: Human: 100%

Product images:



Host: Rabbit
Target Name: MICA
Sample Tissue: HepG2 Cell Lysate
Antibody Dilution: 1.0 μ g/ml

Host: Rabbit; Target Name: MICA; Sample Tissue: HepG2 Whole Cell lysates; Antibody Dilution: 1.0 ug/ml