

## Product datasheet for **TA334660**

### beta Sarcoglycan (SGCB) Rabbit Polyclonal Antibody

#### Product data:

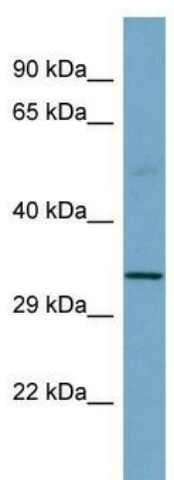
Product Type:	Primary Antibodies
Applications:	WB
Recommended Dilution:	WB
Reactivity:	Human
Host:	Rabbit
Isotype:	IgG
Clonality:	Polyclonal
Immunogen:	The immunogen for anti-SGCB antibody is: synthetic peptide directed towards the middle region of Human SGCB. Synthetic peptide located within the following region: RIGPNGCDSMELHESGLLRFKQVSDMGVIHPLYKSTVGGRRNENLVITGN
Formulation:	Liquid. Purified antibody supplied in 1x PBS buffer with 0.09% (w/v) sodium azide and 2% sucrose. <i>Note that this product is shipped as lyophilized powder to China customers.</i>
Purification:	Affinity Purified
Conjugation:	Unconjugated
Storage:	Store at -20°C as received.
Stability:	Stable for 12 months from date of receipt.
Predicted Protein Size:	34 kDa
Gene Name:	sarcoglycan beta
Database Link:	<a href="#">NP_000223</a> <a href="#">Entrez Gene 6443 Human</a> <a href="#">Q16585</a>
Background:	The function of this protein remains unknown.
Synonyms:	A3b; LGMD2E; SGC
Note:	Immunogen Sequence Homology: Dog: 100%; Pig: 100%; Rat: 100%; Human: 100%; Mouse: 100%; Bovine: 100%; Rabbit: 100%; Zebrafish: 100%; Guinea pig: 100%; Horse: 93%
Protein Families:	Druggable Genome, Transmembrane



[View online »](#)

**Protein Pathways:** Arrhythmogenic right ventricular cardiomyopathy (ARVC), Dilated cardiomyopathy, Hypertrophic cardiomyopathy (HCM), Viral myocarditis

**Product images:**



Host: Rabbit; Target Name: SGCB; Sample Tissue: Fetal Small Intestine lysates; Antibody Dilution: 1.0 ug/ml