

Product datasheet for **TA334656**

beta glucuronidase (GUSB) Rabbit Polyclonal Antibody

Product data:

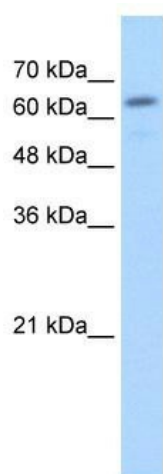
Product Type:	Primary Antibodies
Applications:	IHC, WB
Recommended Dilution:	WB, IHC
Reactivity:	Human
Host:	Rabbit
Isotype:	IgG
Clonality:	Polyclonal
Immunogen:	The immunogen for anti-GUSB antibody: synthetic peptide directed towards the C terminal of human GUSB. Synthetic peptide located within the following region: VLGNKKGIFTRQRQPKSAAFLLRERYWKIANETRYPHSVAKSQCLENSPF
Formulation:	Liquid. Purified antibody supplied in 1x PBS buffer with 0.09% (w/v) sodium azide and 2% sucrose. <i>Note that this product is shipped as lyophilized powder to China customers.</i>
Purification:	Protein A purified
Conjugation:	Unconjugated
Storage:	Store at -20°C as received.
Stability:	Stable for 12 months from date of receipt.
Predicted Protein Size:	72 kDa
Gene Name:	glucuronidase beta
Database Link:	NP_000172 Entrez Gene 2990 Human P08236
Background:	GUSB plays an important role in the degradation of dermatan and keratan sulfates.
Synonyms:	BG; MPS7
Note:	Immunogen Sequence Homology: Pig: 100%; Horse: 100%; Human: 100%; Mouse: 100%; Rabbit: 100%; Guinea pig: 100%; Bovine: 93%; Dog: 92%; Rat: 92%; Zebrafish: 92%
Protein Families:	Druggable Genome, Transmembrane



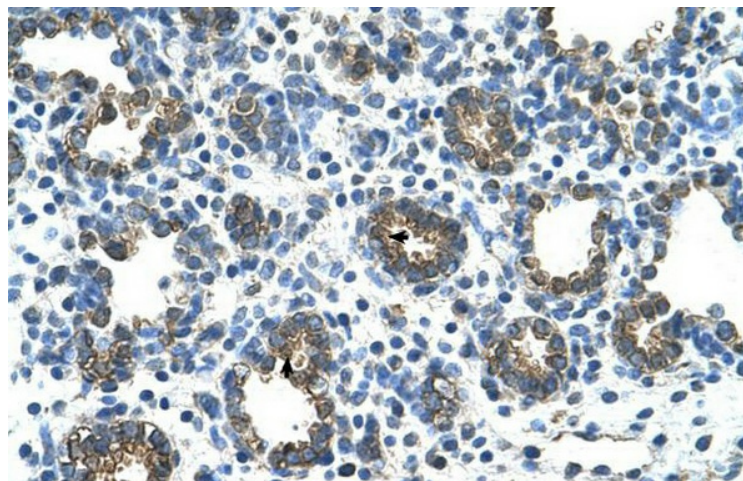
[View online »](#)

Protein Pathways:

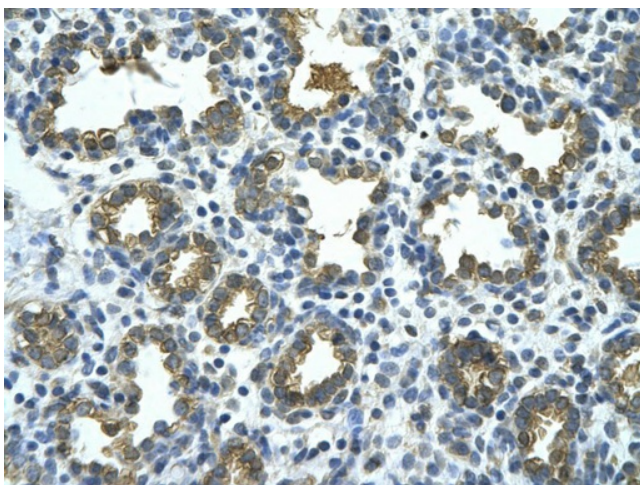
Drug metabolism - other enzymes, Glycosaminoglycan degradation, Lysosome, Metabolic pathways, Pentose and glucuronate interconversions, Porphyrin and chlorophyll metabolism, Starch and sucrose metabolism

Product images:

WB Suggested Anti-GUSB Antibody Titration: 2.5 ug/ml; Positive Control: HepG2 cell lysate



Human Lung



Rabbit Anti-GUSB Antibody; Paraffin Embedded
Tissue: Human alveolar cell; Cellular Data:
Epithelial cells of renal tubule; Antibody
Concentration: 4.0-8.0 ug/ml; Magnification: 400X