

Product datasheet for **TA334655**

Growth hormone receptor (GHR) Rabbit Polyclonal Antibody

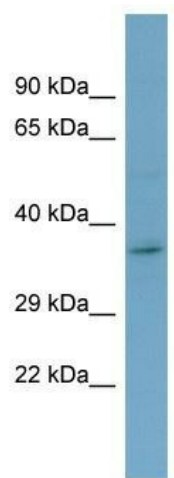
Product data:

Product Type:	Primary Antibodies
Applications:	WB
Recommended Dilution:	WB
Reactivity:	Human
Host:	Rabbit
Isotype:	IgG
Clonality:	Polyclonal
Immunogen:	The immunogen for anti-GHR antibody is: synthetic peptide directed towards the C-terminal region of Human GHR. Synthetic peptide located within the following region: YSLKVDKEYEVRVRSKQRNSGNYGEFSEVLYVTLPQMSQFTCEEDFYFPW
Formulation:	Liquid. Purified antibody supplied in 1x PBS buffer with 0.09% (w/v) sodium azide and 2% sucrose. <i>Note that this product is shipped as lyophilized powder to China customers.</i>
Purification:	Affinity Purified
Conjugation:	Unconjugated
Storage:	Store at -20°C as received.
Stability:	Stable for 12 months from date of receipt.
Predicted Protein Size:	32 kDa
Gene Name:	growth hormone receptor
Database Link:	NP_001229391 Entrez Gene 2690 Human P10912



[View online »](#)

Background:	This gene encodes a member of the type I cytokine receptor family, which is a transmembrane receptor for growth hormone. Binding of growth hormone to the receptor leads to receptor dimerization and the activation of an intra- and intercellular signal transduction pathway leading to growth. Mutations in this gene have been associated with Laron syndrome, also known as the growth hormone insensitivity syndrome (GHIS), a disorder characterized by short stature. In humans and rabbits, but not rodents, growth hormone binding protein (GHBP) is generated by proteolytic cleavage of the extracellular ligand-binding domain from the mature growth hormone receptor protein.
Synonyms:	GHBP; GHIP
Note:	Immunogen Sequence Homology: Human: 100%; Dog: 79%; Pig: 79%; Horse: 79%
Protein Families:	Druggable Genome, Transmembrane
Protein Pathways:	Cytokine-cytokine receptor interaction, Jak-STAT signaling pathway, Neuroactive ligand-receptor interaction

Product images:

Host: Rabbit; Target Name: GHR; Sample Tissue: OVCAR-3 Whole cell lysates; Antibody Dilution: 1.0 ug/ml