

Product datasheet for **TA334651**

glucose 6 phosphatase, catalytic subunit (G6PC) Rabbit Polyclonal Antibody

Product data:

Product Type:	Primary Antibodies
Applications:	WB
Recommended Dilution:	WB
Reactivity:	Mouse
Host:	Rabbit
Isotype:	IgG
Clonality:	Polyclonal
Immunogen:	The immunogen for anti-G6pc antibody: synthetic peptide corresponding to a region of Mouse. Synthetic peptide located within the following region: DFGIQSTRYLQVNYQDSQDWFILVSVIADLRNAFYVLFPIWFHLKETVGI
Formulation:	Liquid. Purified antibody supplied in 1x PBS buffer with 0.09% (w/v) sodium azide and 2% sucrose. <i>Note that this product is shipped as lyophilized powder to China customers.</i>
Purification:	Affinity Purified
Conjugation:	Unconjugated
Storage:	Store at -20°C as received.
Stability:	Stable for 12 months from date of receipt.
Predicted Protein Size:	40 kDa
Gene Name:	glucose-6-phosphatase catalytic subunit
Database Link:	NP_000142 Entrez Gene 14377 Mouse P35575
Background:	G6pc hydrolyzes glucose-6-phosphate to glucose in the endoplasmic reticulum. It forms with the glucose-6-phosphate transporter (SLC37A4/G6PT) the complex responsible for glucose production through glycogenolysis and gluconeogenesis. Hence, it is the key enzyme in homeostatic regulation of blood glucose levels.
Synonyms:	G6PC1; G6PT; GSD1; GSD1a



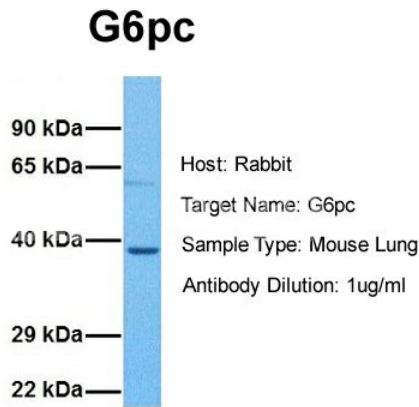
[View online »](#)

Note: Immunogen Sequence Homology: Dog: 100%; Human: 100%; Pig: 93%; Mouse: 93%; Bovine: 93%; Guinea pig: 93%; Rat: 86%; Horse: 86%; Rabbit: 85%

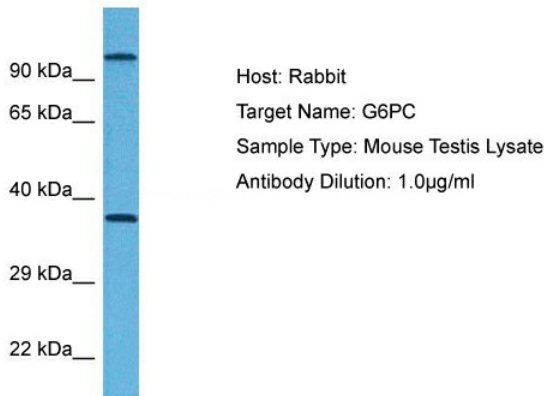
Protein Families: Druggable Genome, ES Cell Differentiation/IPS, Transmembrane

Protein Pathways: Adipocytokine signaling pathway, Galactose metabolism, Glycolysis / Gluconeogenesis, Insulin signaling pathway, Metabolic pathways, Starch and sucrose metabolism

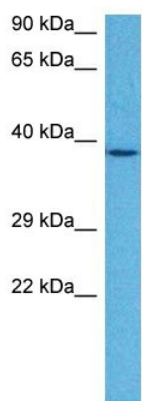
Product images:



G6pc Antibody - N-terminal region (TA334651) in Mouse Lung using Western Blot.



G6PC Antibody - N-terminal region (TA334651) in Mouse Testis using Western Blot.



Host: Rabbit
Target Name: G6PC
Sample Type: Mouse Liver Lysate
Antibody Dilution: 1.0 μ g/ml

G6PC Antibody - N-terminal region (TA334651) in Mouse Liver using Western Blot.