

## Product datasheet for **TA334650**

### Galactoside 2 alpha L fucosyltransferase 1 (FUT1) Rabbit Polyclonal Antibody

#### Product data:

Product Type:	Primary Antibodies
Applications:	WB
Recommended Dilution:	WB
Reactivity:	Human
Host:	Rabbit
Isotype:	IgG
Clonality:	Polyclonal
Immunogen:	The immunogen for anti-FUT1 antibody: synthetic peptide directed towards the middle region of human FUT1. Synthetic peptide located within the following region: EATPWKDFALLTQCNHTIMTIGTFGFWAAYLAGGDTVYLANFTLPDSEFL
Formulation:	Liquid. Purified antibody supplied in 1x PBS buffer with 0.09% (w/v) sodium azide and 2% sucrose. <i>Note that this product is shipped as lyophilized powder to China customers.</i>
Purification:	Affinity Purified
Conjugation:	Unconjugated
Storage:	Store at -20°C as received.
Stability:	Stable for 12 months from date of receipt.
Predicted Protein Size:	41 kDa
Gene Name:	fucosyltransferase 1 (H blood group)
Database Link:	<a href="#">NP_000139</a> <a href="#">Entrez Gene 2523 Human P19526</a>
Background:	The protein encoded by this gene is a Golgi stack membrane protein that is involved in the creation of a precursor of the H antigen, which is required for the final step in the soluble A and B antigen synthesis pathway. This gene is one of two encoding the galactoside 2-L-fucosyltransferase enzyme. Mutations in this gene are a cause of the H-Bombay blood group.
Synonyms:	H; HH; HSC



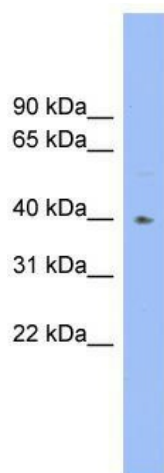
[View online »](#)

**Note:** Immunogen Sequence Homology: Dog: 100%; Rat: 100%; Goat: 100%; Horse: 100%; Human: 100%; Mouse: 100%; Rabbit: 100%; Pig: 92%; Bovine: 92%; Guinea pig: 92%

**Protein Families:** Druggable Genome, Transmembrane

**Protein Pathways:** Glycosphingolipid biosynthesis - globo series, Glycosphingolipid biosynthesis - lacto and neolacto series, Metabolic pathways

### Product images:



WB Suggested Anti-FUT1 Antibody Titration: 0.2-1 ug/ml; Positive Control: Human heart