

## Product datasheet for TA334649

### EPOR Rabbit Polyclonal Antibody

#### Product data:

Product Type:	Primary Antibodies
Applications:	WB
Recommended Dilution:	WB
Reactivity:	Mouse
Host:	Rabbit
Isotype:	IgG
Clonality:	Polyclonal
Immunogen:	The immunogen for anti-Epor antibody: synthetic peptide corresponding to a region of Mouse. Synthetic peptide located within the following region: SVRFWCSLPTADTSSFVPLELQVTEASGSPRYHRIIHINEVLLDAPAGL
Formulation:	Liquid. Purified antibody supplied in 1x PBS buffer with 0.09% (w/v) sodium azide and 2% sucrose. <i>Note that this product is shipped as lyophilized powder to China customers.</i>
Purification:	Affinity Purified
Conjugation:	Unconjugated
Storage:	Store at -20°C as received.
Stability:	Stable for 12 months from date of receipt.
Predicted Protein Size:	55 kDa
Gene Name:	erythropoietin receptor
Database Link:	<a href="#">NP_000112</a> <a href="#">Entrez Gene 13857 Mouse P19235</a>
Background:	Epor is a receptor for erythropoietin. Epor mediates erythropoietin-induced erythroblast proliferation and differentiation. Upon EPO stimulation, EPOR dimerizes triggering the JAK2/STAT5 signaling cascade. In some cell types, Epor can also activate STAT1 and STAT3. Epor may also activate the LYN tyrosine kinase.
Synonyms:	EPO-R



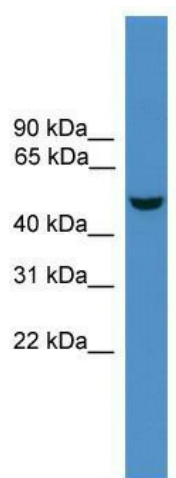
[View online »](#)

**Note:** Immunogen Sequence Homology: Dog: 100%; Pig: 100%; Rat: 100%; Horse: 100%; Human: 100%; Mouse: 100%; Sheep: 100%; Bovine: 100%; Rabbit: 100%; Guinea pig: 100%

**Protein Families:** Druggable Genome, Secreted Protein, Transmembrane

**Protein Pathways:** Cytokine-cytokine receptor interaction, Hematopoietic cell lineage, Jak-STAT signaling pathway

**Product images:**



WB Suggested Anti-Epor Antibody Titration: 0.2-1 ug/ml; ELISA Titer: 1: 1562500; Positive Control: Mouse Liver