

Product datasheet for **TA334647**

CYBA Rabbit Polyclonal Antibody

Product data:

Product Type:	Primary Antibodies
Applications:	WB
Recommended Dilution:	WB
Reactivity:	Human
Host:	Rabbit
Isotype:	IgG
Clonality:	Polyclonal
Immunogen:	The immunogen for anti-CYBA antibody: synthetic peptide directed towards the middle region of human CYBA. Synthetic peptide located within the following region: TILGTACLAIASGIYLLAAVRGEQWTPIEPKPRERPQIGGTIKQPPSNPP
Formulation:	Liquid. Purified antibody supplied in 1x PBS buffer with 0.09% (w/v) sodium azide and 2% sucrose. <i>Note that this product is shipped as lyophilized powder to China customers.</i>
Purification:	Affinity Purified
Conjugation:	Unconjugated
Storage:	Store at -20°C as received.
Stability:	Stable for 12 months from date of receipt.
Predicted Protein Size:	21 kDa
Gene Name:	cytochrome b-245 alpha chain
Database Link:	NP_000092 Entrez Gene 1535 Human P13498
Background:	Cytochrome b is comprised of a light chain (alpha) and a heavy chain (beta). This gene encodes the light, alpha subunit which has been proposed as a primary component of the microbicidal oxidase system of phagocytes. Mutations in this gene are associated with autosomal recessive chronic granulomatous disease (CGD), that is characterized by the failure of activated phagocytes to generate superoxide, which is important for the microbicidal activity of these cells. [provided by RefSeq, Jul 2008]



[View online »](#)

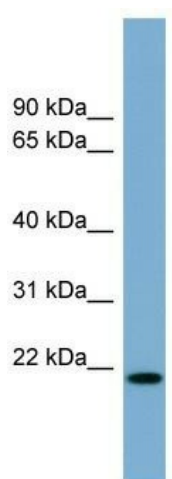
Synonyms: p22-PHOX

Note: Immunogen Sequence Homology: Human: 100%; Sheep: 93%; Bovine: 93%; Pig: 86%; Rat: 86%; Mouse: 86%; Dog: 79%; Horse: 79%; Rabbit: 79%

Protein Families: Druggable Genome, Transmembrane

Protein Pathways: Leukocyte transendothelial migration

Product images:



WB Suggested Anti-CYBA Antibody Titration: 0.2-1 ug/ml; ELISA Titer: 1: 1562500; Positive Control: Human Small Intestine