

Product datasheet for **TA334640**

NAT2 Rabbit Polyclonal Antibody

Product data:

Product Type:	Primary Antibodies
Applications:	WB
Recommended Dilution:	WB
Reactivity:	Human
Host:	Rabbit
Isotype:	IgG
Clonality:	Polyclonal
Immunogen:	The immunogen for anti-NAT2 antibody: synthetic peptide directed towards the middle region of human NAT2. Synthetic peptide located within the following region: TYRKFNKYDNTDLVEFKLTTEEEVEEVLNRNIFKISLGRNLVPKPGDGSLT
Formulation:	Liquid. Purified antibody supplied in 1x PBS buffer with 0.09% (w/v) sodium azide and 2% sucrose. <i>Note that this product is shipped as lyophilized powder to China customers.</i>
Purification:	Affinity Purified
Conjugation:	Unconjugated
Storage:	Store at -20°C as received.
Stability:	Stable for 12 months from date of receipt.
Predicted Protein Size:	33 kDa
Gene Name:	N-acetyltransferase 2 (arylamine N-acetyltransferase)
Database Link:	NP_000006 Entrez Gene 10 Human P11245
Background:	NAT2 is a N-acetyltransferase 2 (arylamine N-acetyltransferase 2). This enzyme functions to both activate and deactivate arylamine and hydrazine drugs and carcinogens. Polymorphisms in its gene are responsible for the N-acetylation polymorphism in which human populations segregate into rapid, intermediate, and slow acetylator phenotypes. Polymorphisms in NAT2 are also associated with higher incidences of cancer and drug toxicity.
Synonyms:	AAC2; NAT-2; PNAT



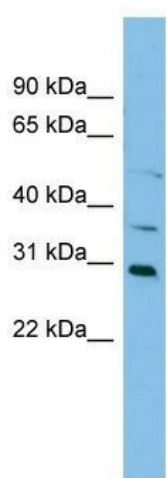
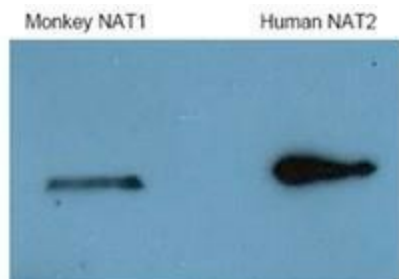
[View online »](#)

Note: Immunogen Sequence Homology: Human: 100%

Protein Families: Transmembrane

Protein Pathways: Caffeine metabolism, Drug metabolism - other enzymes, Metabolic pathways

Product images:



WB Suggested Anti-NAT2 Antibody Titration: 0.2-1 ug/ml; ELISA Titer: 1: 1562500; Positive Control: HepG2 cell lysate