

Product datasheet for **TA334639**

NAT2 Rabbit Polyclonal Antibody

Product data:

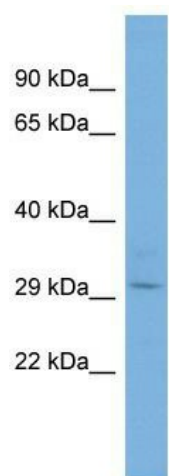
Product Type:	Primary Antibodies
Applications:	WB
Recommended Dilution:	WB
Reactivity:	Human
Host:	Rabbit
Isotype:	IgG
Clonality:	Polyclonal
Immunogen:	The immunogen for anti-NAT2 antibody is: synthetic peptide directed towards the C-terminal region of Human NAT2. Synthetic peptide located within the following region: TPEGVYCLVGFILTYRKFNYKDNTDLVEFKLTLEEEVEEVLNRNIFKISLG
Formulation:	Liquid. Purified antibody supplied in 1x PBS buffer with 0.09% (w/v) sodium azide and 2% sucrose. <i>Note that this product is shipped as lyophilized powder to China customers.</i>
Purification:	Affinity Purified
Conjugation:	Unconjugated
Storage:	Store at -20°C as received.
Stability:	Stable for 12 months from date of receipt.
Predicted Protein Size:	31 kDa
Gene Name:	N-acetyltransferase 2 (arylamine N-acetyltransferase)
Database Link:	NP_000006 Entrez Gene 10 Human P11245
Background:	The function of this protein remains unknown.
Synonyms:	AAC2; NAT-2; PNAT
Note:	Immunogen Sequence Homology: Human: 100%; Rabbit: 93%; Pig: 86%; Rat: 86%; Horse: 86%; Mouse: 86%; Bovine: 86%; Guinea pig: 86%
Protein Families:	Transmembrane



[View online »](#)

Protein Pathways: Caffeine metabolism, Drug metabolism - other enzymes, Metabolic pathways

Product images:



Host: Rabbit; Target Name: NAT2; Sample Tissue: Jurkat Whole cell lysates; Antibody Dilution: 1.0 ug/ml