

Product datasheet for TA334637

SLC25A24 Rabbit Polyclonal Antibody

Product data:

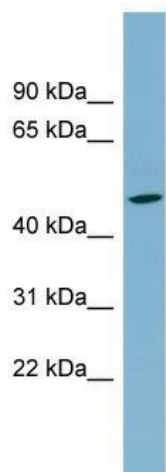
| | |
|-------------------------|---|
| Product Type: | Primary Antibodies |
| Applications: | WB |
| Recommended Dilution: | WB |
| Reactivity: | Human |
| Host: | Rabbit |
| Isotype: | IgG |
| Clonality: | Polyclonal |
| Immunogen: | The immunogen for anti-SLC25A24 antibody: synthetic peptide directed towards the N terminal of human SLC25A24. Synthetic peptide located within the following region: MDSLYGDLFWYLDYNKDGTLDFELQEGLEDVGAIQSLEEAKKIFTTGDV |
| Formulation: | Liquid. Purified antibody supplied in 1x PBS buffer with 0.09% (w/v) sodium azide and 2% sucrose. <i>Note that this product is shipped as lyophilized powder to China customers.</i> |
| Purification: | Affinity Purified |
| Conjugation: | Unconjugated |
| Storage: | Store at -20°C as received. |
| Stability: | Stable for 12 months from date of receipt. |
| Predicted Protein Size: | 51 kDa |
| Gene Name: | solute carrier family 25 member 24 |
| Database Link: | NP_998816 Entrez Gene 29957 Human Q6NUK1 |
| Background: | SLC25A24 is a calcium-dependent mitochondrial solute carrier. Mitochondrial solute carriers shuttle metabolites, nucleotides, and cofactors through the mitochondrial inner membrane. It may act as a ATP-Mg/Pi exchanger that mediates the transport of Mg-ATP |
| Synonyms: | APC1; SCAMC-1 |
| Note: | Immunogen Sequence Homology: Human: 100% |



[View online »](#)

Protein Families: Druggable Genome

Product images:



WB Suggested Anti-SLC25A24 Antibody Titration:
0.2-1 ug/ml; Positive Control: Human Small
Intestine