

## Product datasheet for **TA334636**

### SLC16A12 Rabbit Polyclonal Antibody

#### Product data:

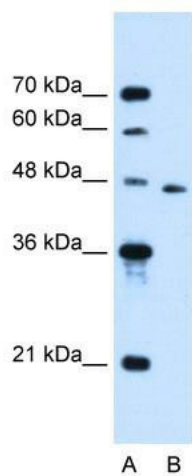
Product Type:	Primary Antibodies
Applications:	WB
Recommended Dilution:	WB
Reactivity:	Human
Host:	Rabbit
Isotype:	IgG
Clonality:	Polyclonal
Immunogen:	The immunogen for anti-SLC16A12 antibody: synthetic peptide directed towards the N terminal of human SLC16A12. Synthetic peptide located within the following region: WMIVAGCFLVTICTRAVTRCISIFFVEFQTYFTQDYAQTAWIHSIVDCVT
Formulation:	Liquid. Purified antibody supplied in 1x PBS buffer with 0.09% (w/v) sodium azide and 2% sucrose. <i>Note that this product is shipped as lyophilized powder to China customers.</i>
Purification:	Affinity Purified
Conjugation:	Unconjugated
Storage:	Store at -20°C as received.
Stability:	Stable for 12 months from date of receipt.
Predicted Protein Size:	53 kDa
Gene Name:	solute carrier family 16 member 12
Database Link:	<a href="#">NP_998771</a> <a href="#">Entrez Gene 387700 Human</a> <a href="#">Q6ZSM3</a>
Background:	As a proton-linked monocarboxylate transporter, SLC16A12 catalyzes the rapid transport across the plasma membrane of many monocarboxylates.
Synonyms:	CJMG; CRT2; MCT12
Note:	Immunogen Sequence Homology: Horse: 100%; Human: 100%; Dog: 93%; Pig: 93%; Rat: 93%; Bovine: 93%; Rabbit: 93%; Guinea pig: 93%; Mouse: 86%



[View online »](#)

Protein Families: Transmembrane

### Product images:



WB Suggested Anti-SLC16A12 Antibody Titration:  
0.2-1 ug/ml; Positive Control: Jurkat cell lysate